





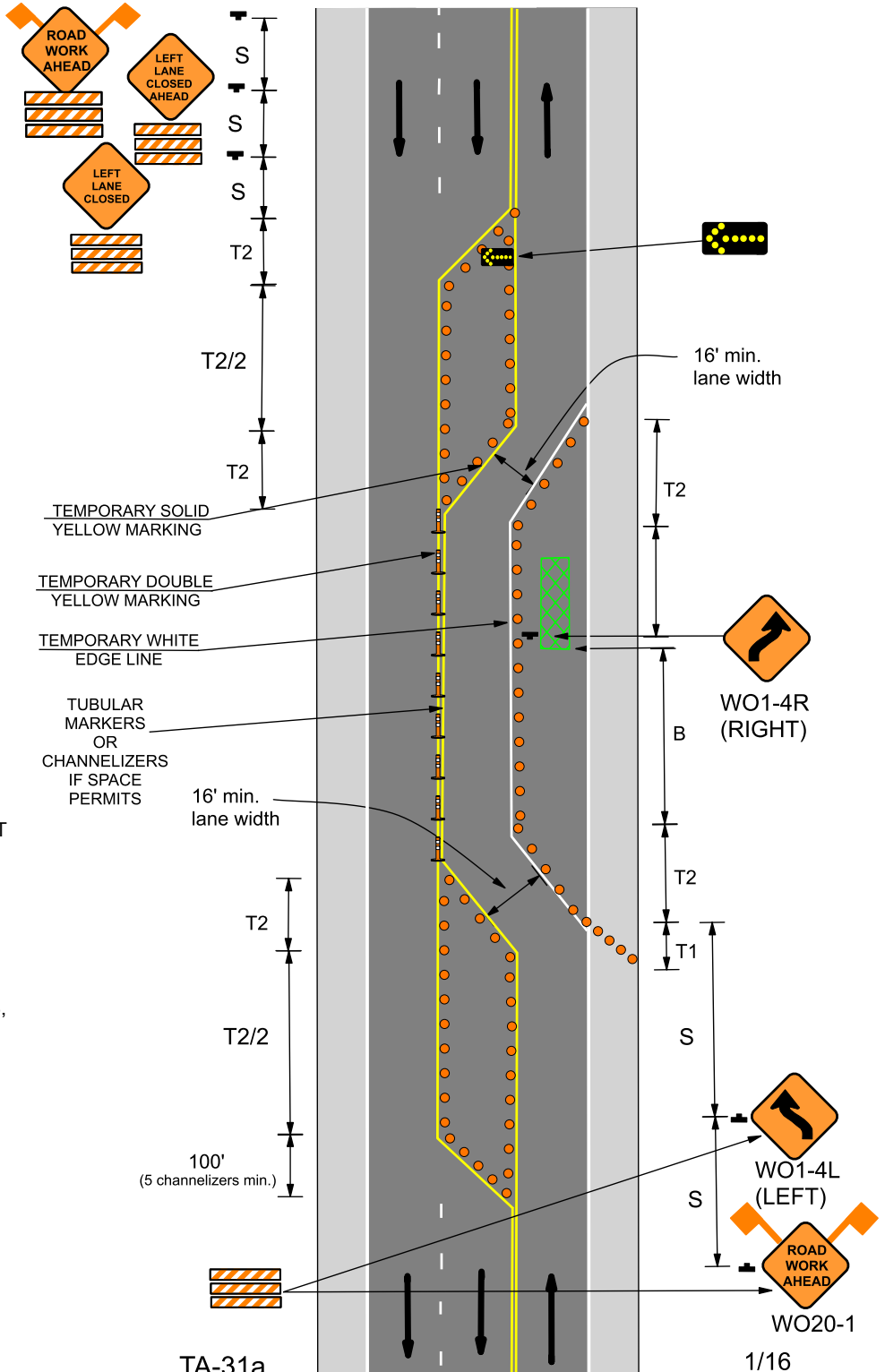


616.8.31a (TA-31a) Lane Closure on Alternate Passing Lanes - DE/CM

SPEED Permanent Posted (mph)	SIGN SPACING (ft.)		TAPER LENGTH (ft.)		OPTIONAL	CHANNELIZER SPACING (ft.)	
	Undivided (S)	Divided (S)	Shoulder (1) (T1)	Lane (2) (T2)	BUFFER LENGTH (ft.) (B)	Tapers	Buffer/ Work Areas
0-35	200	-	70	245	280	35	40
40-45	350	-	150	540	400	40	80
50-55	500	-	185	660	560	50	80
60-70	1000	-	235	840	840	60	120

1 Shoulder taper length based on 10 ft. (standard shoulder width) offset. 2. Lane taper length based on 12 ft. (standard lane width) offset.

-  Work Area
-  Sign
-  Channelizer
-  Channelizer or Tubular Markers
-  Flashing Arrow Panel
-  Advance Warning Rail System



NOTES:

SEE EPG 616.12 WORK ZONE SPEED LIMITS FOR SPEED LIMIT GUIDELINES.

REMOVE AND/OR MODIFY EXISTING PAVEMENT AS NEEDED.

TEMPORARY PAVEMENT MARKING REQUIRED WITH LONG TERM CLOSURES.

FOR SHORT TERM OPERATIONS WHERE IT IS NOT FEASIBLE TO MODIFY PAVEMENT MARKING. DEVICE SPACINGS ARE ONE-HALF OF THE SPACING.

IF RUMBLE STRIPS ARE USED, REVIEW 616.6.87 RUMBLE STRIPS.

FOR FLAGS AND ADVANCE RAIL SYSTEMS, REFER TO EPG 616.6.2.2 FLAGS AND ADVANCE WARNING RAIL SYSTEM.