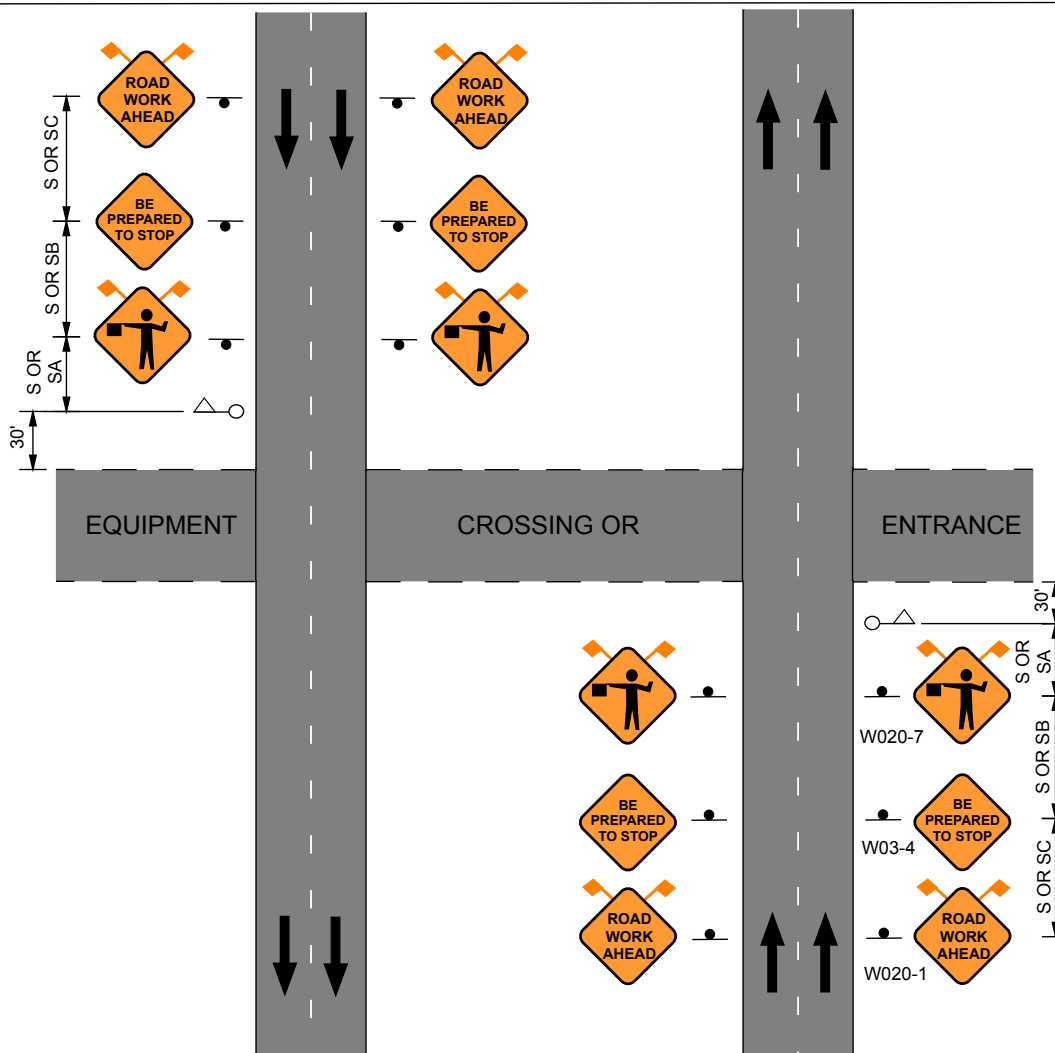


## 616.8.14a (TA-14a) Equipment Crossing or Entrance on Divided Highway Truck and Equipment Crossing or Entrance - DE/CM

SPEED Permanent Posted (mph)	SIGN SPACING (ft.)		TAPER LENGTH (ft.)		OPTIONAL	CHANNELIZER SPACING (ft.)	
	Undivided (S)	Divided (S)	Shoulder (1) (T1)	Lane (2) (T2)	BUFFER LENGTH (ft.) (B)	Tapers	Buffer/ Work Areas
0-35	-	200	-	-	-	-	-
40-45	-	500	-	-	-	-	-
50-55	-	1000	-	-	-	-	-
60-70	-	SA - 1000 SB - 1500 SC - 2640	-	-	-	-	-

1 Shoulder taper length based on 10 ft. (standard shoulder width) offset. 2. Lane taper length based on 12 ft. (standard lane width) offset.



**NOTES:**

SIGN W020-1 NOT NEEDED IF ENTRANCE IS LOCATED WITHIN THE LIMITS OF AN ACTIVITY AREA WHERE ANOTHER SIGN W020-1 IS ALREADY USED.

SEE EPG 616.8.14B TEMPORARY MEDIAN OPENING FOR TEMPORARY MEDIAN OPENING DETAIL.

WHEN A ROAD USED EXCLUSIVELY AS A HAUL ROAD IS NOT IN USE, THE HAUL ROAD SHALL BE CLOSED WITH TYPE 3 BARRICADES AND FLAGGER SYMBOL SIGNS COVERED.

THE FLAGGER SHALL FOLLOW THE PROCEDURES PROVIDED IN EPG 616.5.07 AND 616.5.08.

AT NIGHT, FLAGGER STATIONS SHALL BE ILLUMINATED WITH AN AVERAGE MAINTAINED INTENSITY OF 0.6 FOOTCANDLES (6.5 LUX).

SEE EPG 616.12 WORK ZONE SPEED LIMITS FOR SPEED LIMIT GUIDELINES.

IF RUMBLE STRIPS ARE USED, REVIEW 616.6.87 RUMBLE STRIPS.