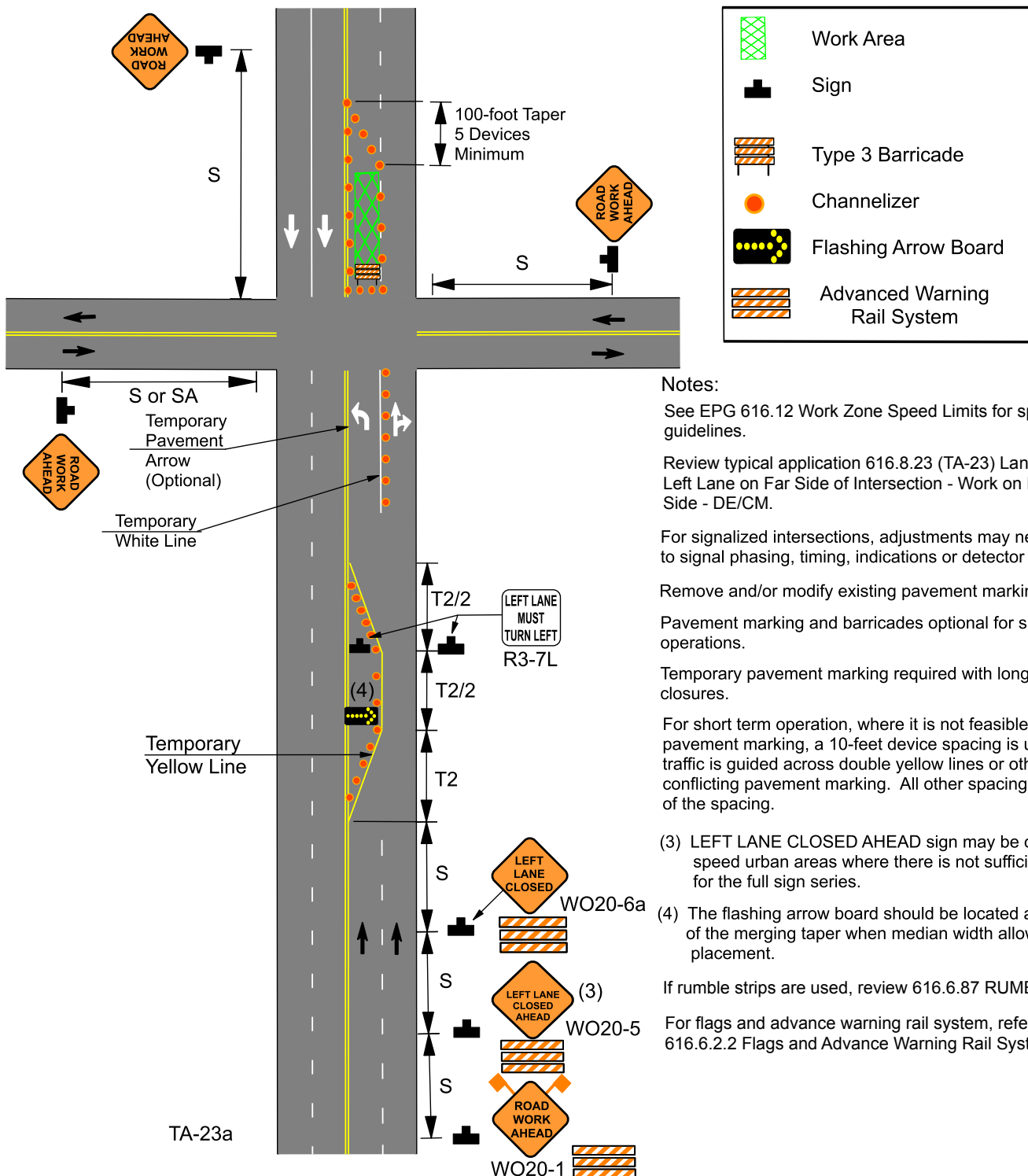


616.8.23a (TA-23a) Left Lane Closure at Intersection - Work on Far Side Only - DE/CM

| SPEED | SIGN SPACING (ft.) | | TAPER LENGTH (ft.) | | OPTIONAL | CHANNELIZER SPACING (ft.) | |
|-------|--------------------|-------------------------------------|--------------------|---------------|-------------------------|---------------------------|--------------------|
| | Undivided (S) | Divided (S) | Shoulder (1) (T1) | Lane (2) (T2) | BUFFER LENGTH (ft.) (B) | Tapers | Buffer/ Work Areas |
| 0-35 | 200 | 200 | 70 | 245 | 280 | 35 | 40 |
| 40-45 | 350 | 500 | 150 | 540 | 400 | 40 | 80 |
| 50-55 | 500 | 1000 | 185 | 660 | 560 | 50 | 80 |
| 60-70 | 1000 | SA - 1000 SB - 1500 SC - 2640 | 235 | 840 | 840 | 60 | 120 |

1 Shoulder taper length based on 10 ft. (standard shoulder width) offset. 2. Lane taper length based on 12 ft. (standard lane width) offset.



TA-23a