

SLOTTED SYSTEMS

NOTE:

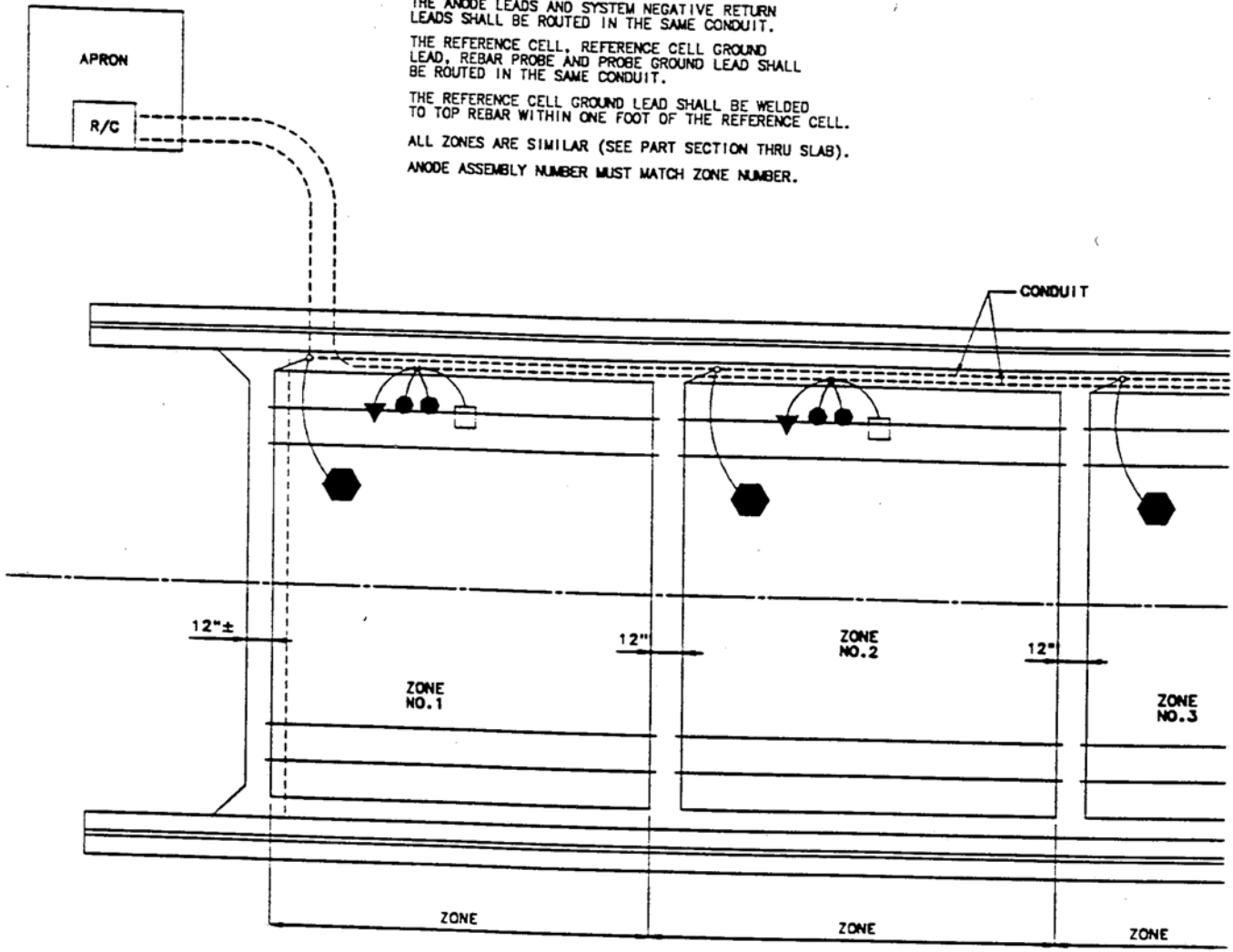
THE ANODE LEADS AND SYSTEM NEGATIVE RETURN LEADS SHALL BE ROUTED IN THE SAME CONDUIT.

THE REFERENCE CELL, REFERENCE CELL GROUND LEAD, REBAR PROBE AND PROBE GROUND LEAD SHALL BE ROUTED IN THE SAME CONDUIT.

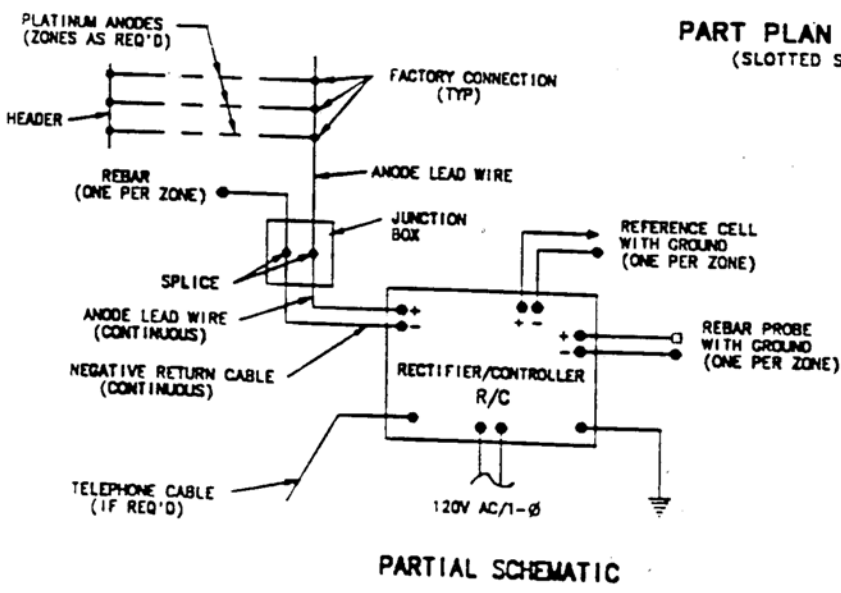
THE REFERENCE CELL GROUND LEAD SHALL BE WELDED TO TOP REBAR WITHIN ONE FOOT OF THE REFERENCE CELL.

ALL ZONES ARE SIMILAR (SEE PART SECTION THRU SLAB).

ANODE ASSEMBLY NUMBER MUST MATCH ZONE NUMBER.



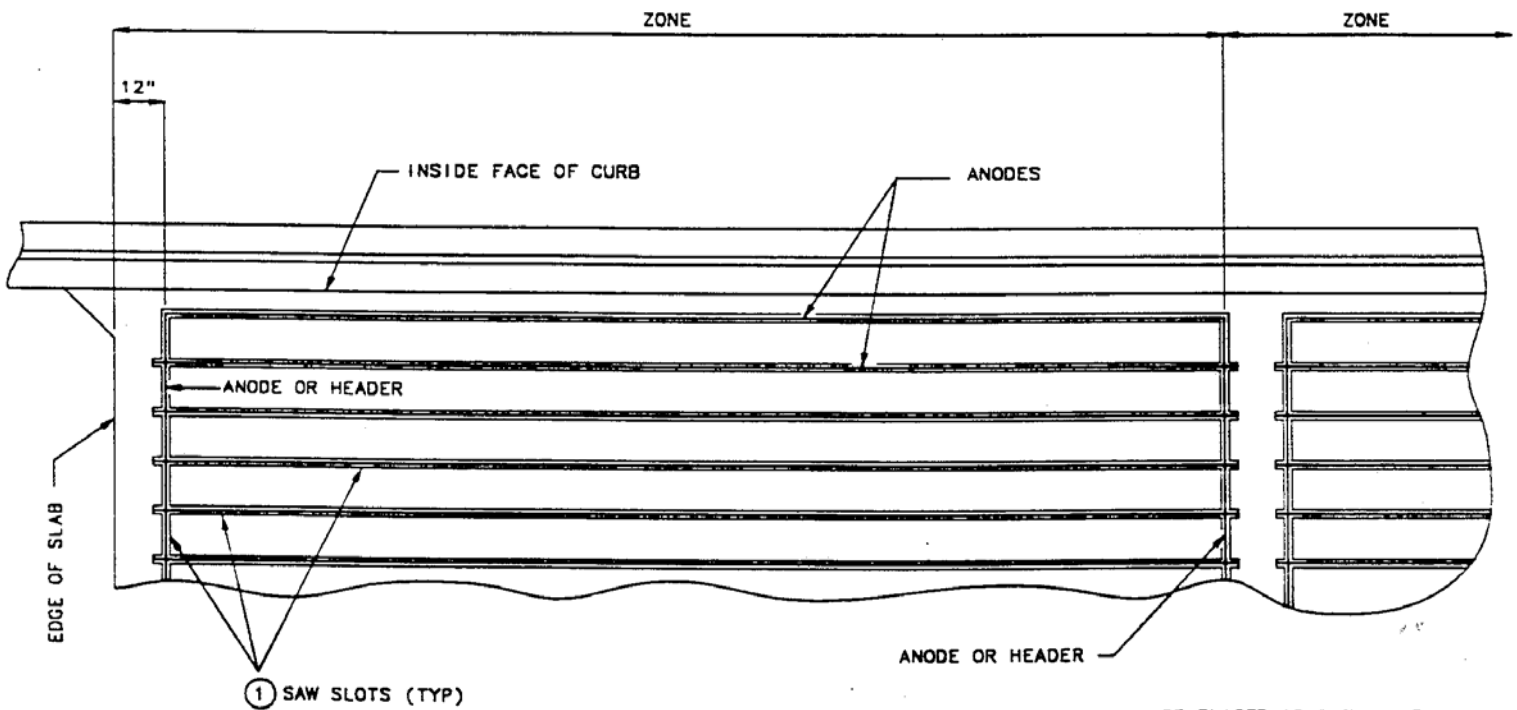
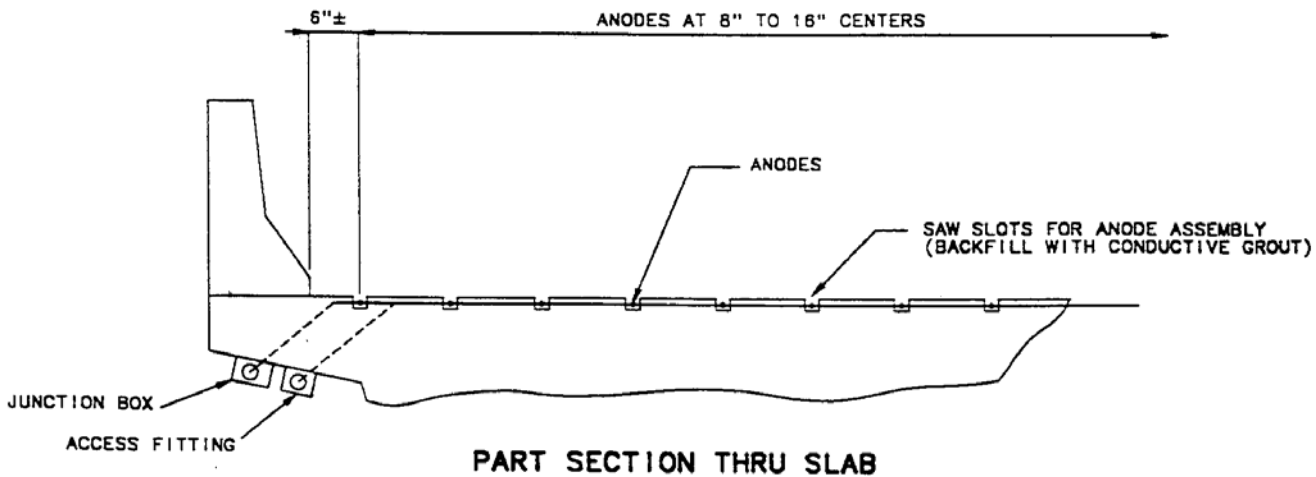
**PART PLAN OF SLAB
(SLOTTED SYSTEMS)**



DENOTATIONS

- SYSTEM NEGATIVE CONNECTION
- REFERENCE CELL
- GROUNDS
- REBAR PROBE (CORROSMETER)
- CONDUIT

SLOTTED SYSTEMS



ANODES SHALL BE PLACED AS SHOWN WITH A PLACEMENT TOLERANCE OF PLUS OR MINUS 3".

TYPICAL ZONE LAYOUT

SLOTTED SYSTEMS

PLATINUM SYSTEM - CONSISTS OF PLATINUM WIRES SET INTO SAWED SLOTS IN THE TOP OF THE CONCRETE DECK AND FILLED WITH A CONDUCTIVE GROUT.

PLATINUM WIRE AND CARBON STRAND SYSTEM - CONSISTS OF PLATINUM (PRIMARY ANODES) LAID AROUND THE CIRCUMFERENCE OF THE GRID AND CARBON STRAND (SECONDARY ANODES) LAID LONGITUDINAL ON 12 TO 16 INCH CENTERS ON THE INTERIOR OF THE GRID.

- ① SAW SLOTS SHALL BE PLACED NO CLOSER THAN 3" TO SLAB DRAINS, EXPANSION DEVICE ARMOR OR OTHER ITEMS PLACED ON BRIDGE DECK.