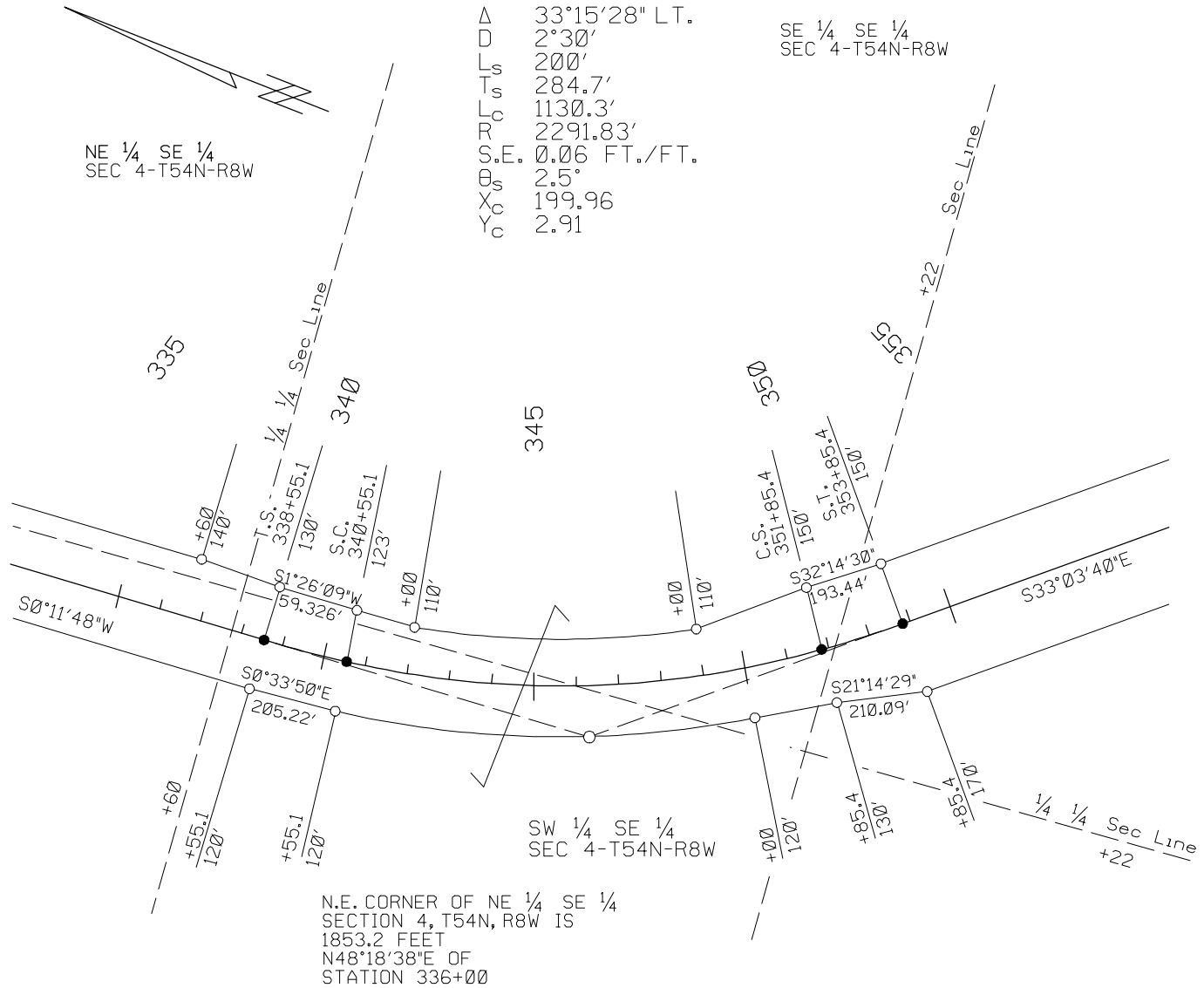


③ STATE OF MISSOURI

P.I. 346+39.7
 Δ 33°15'28" LT.
 D 2°30'
 L_s 200'
 T_s 284.7'
 L_c 1130.3'
 R 2291.83'
 S.E. 0.06 FT./FT.
 θ_s 2.5°
 X_c 199.96
 Y_c 2.91

SE 1/4 SE 1/4
 SEC 4-T54N-R8W

NE 1/4 SE 1/4
 SEC 4-T54N-R8W

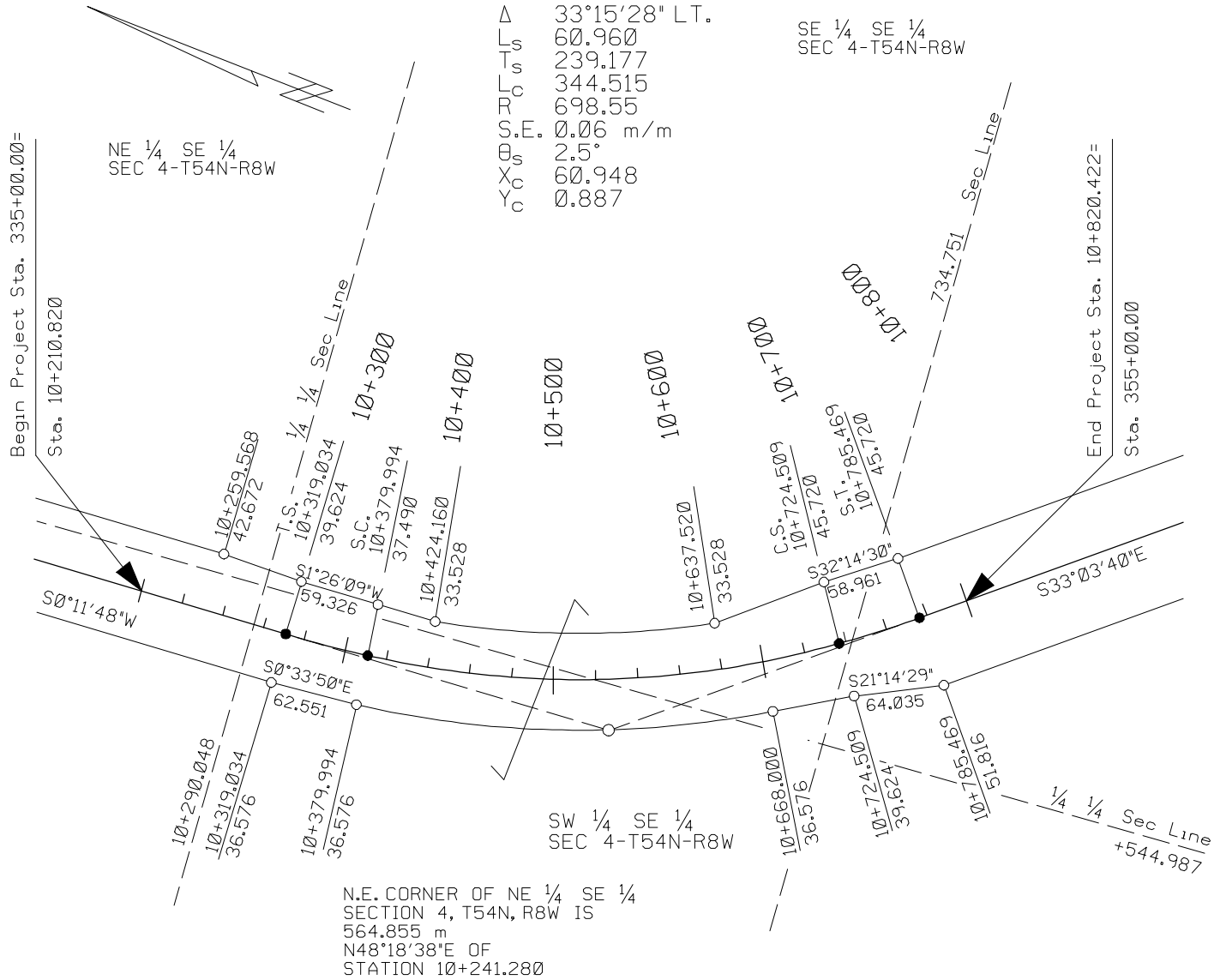


Right Of Way Marker Locations - Spiral Transitions

③ STATE OF MISSOURI

P.I. 10+558.180
 Δ 33°15'28" LT.
 L_s 60.960
 T_s 239.177
 L_c 344.515
 R_c 698.55
 $S.E.$ 0.06 m/m
 θ_s 2.5°
 X_c 60.948
 Y_c 0.887

SE 1/4 SE 1/4
 SEC 4-T54N-R8W



Right Of Way Marker Locations - Spiral Transitions