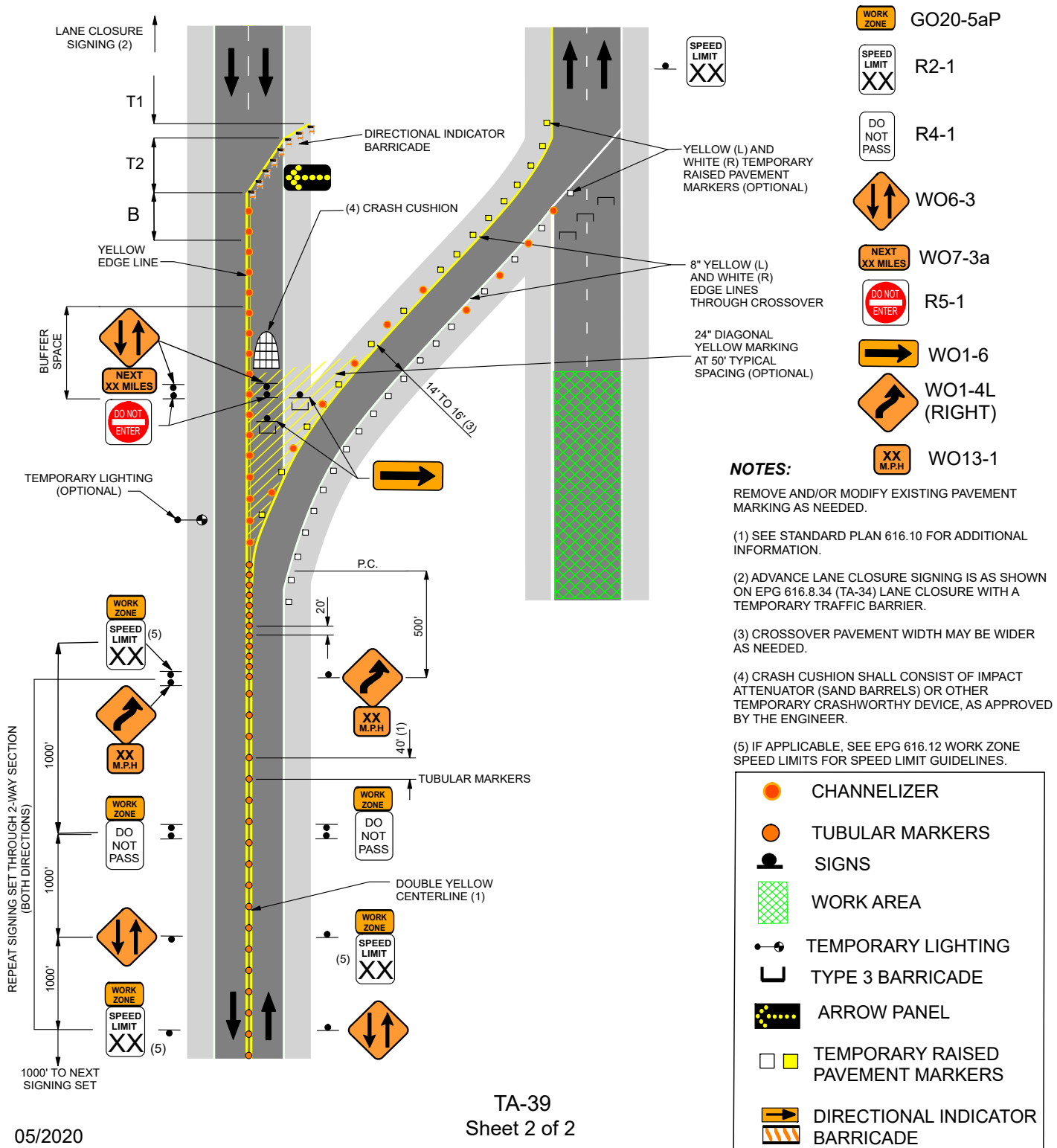


616.8.39 (TA-39) Crossover on Divided Highway - DE/CM

SPEED Permanent Posted (mph)	SIGN SPACING (ft.)		TAPER LENGTH (ft.)		OPTIONAL BUFFER LENGTH (ft.) (B)	CHANNELIZER SPACING (ft.)	
	Undivided (S)	Divided (S)	Shoulder (1) (T1)	Lane (2) (T2)		Tapers	Buffer/ Work Areas
0-35	-	200	70	245	280	35	40
40-45	-	500	150	540	400	40	80
50-55	-	1000	185	660	560	50	80
60-70	-	SA - 1000 SB - 1500 SC - 2640	235	840	840	60	120

1 Shoulder taper length based on 10 ft. (standard shoulder width) offset. 2. Lane taper length based on 12 ft. (standard lane width) offset.



- GO20-5aP
- R2-1
- R4-1
- WO6-3
- WO7-3a
- R5-1
- WO1-6
- WO1-4L (RIGHT)
- WO13-1