

DESIGN DESIGNATION
 A.A.D.T - XXXX = XXXX
 V = XX M.P.H

MISSOURI HIGHWAYS AND TRANSPORTATION COMMISSION

PLANS FOR PROPOSED STATE HIGHWAY

INDEX OF SHEETS

DESCRIPTION	SHEET NUMBER
TITLE SHEET -----	1
TYPICAL SECTIONS (TS) (1 SHEET)-----	2
QUANTITIES (QU) (1 SHEET)-----	3
TRAFFIC CONTROL (TC)-----	4-8

"THIS MEDIA SHOULD NOT BE CONSIDERED A CERTIFIED DOCUMENT."

DATE PREPARED 4/16/2019	
ROUTE	STATE MO
DISTRICT	SHEET NO. 1
COUNTY	
JOB NO.	
CONTRACT ID.	
PROJECT NO.	
BRIDGE NO.	

MISSOURI HIGHWAYS AND TRANSPORTATION COMMISSION

105 WEST CAPITOL
 JEFFERSON CITY, MO 65102
 1-888-ASK-MODOT (1-888-275-6636)

LENGTH OF PROJECT

BEGINNING OF PROJECT _____

END OF PROJECT _____

APPARENT LENGTH _____ MILES

EQUATIONS AND EXCEPTIONS:

TOTAL CORRECTIONS _____

NET LENGTH OF PROJECT _____

STATE LENGTH _____

IF A SEAL IS PRESENT ON THIS SHEET IT HAS BEEN ELECTRONICALLY SEALED AND DATED.

"THIS MEDIA SHOULD NOT BE CONSIDERED A CERTIFIED DOCUMENT."

DATE PREPARED
4/16/2019

ROUTE	STATE
	MO

DISTRICT	SHEET NO.
	2

COUNTY

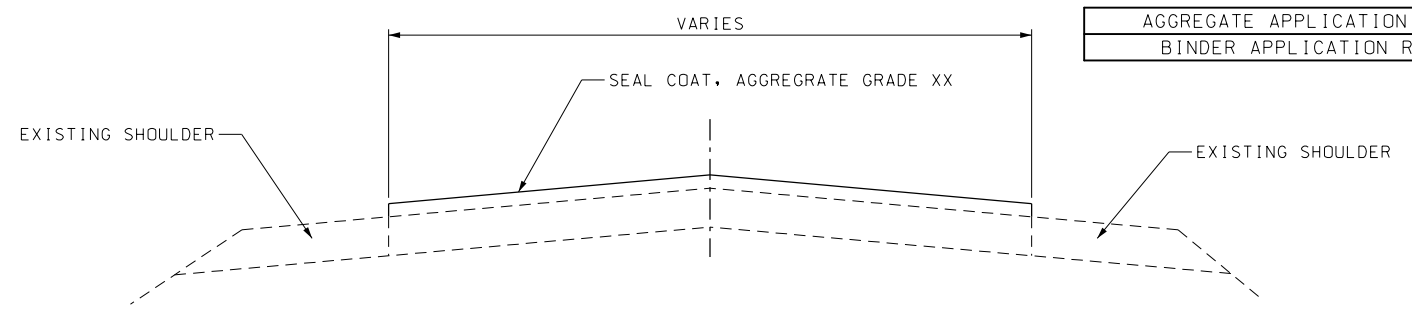
JOB NO.

CONTRACT ID.

PROJECT NO.

BRIDGE NO.


AGGREGATE APPLICATION RATE	XX LBS/YD ²
BINDER APPLICATION RATE	XX GAL/YD ²



TYPICAL SECTION

DESCRIPTION	DATE

MISSOURI HIGHWAYS AND TRANSPORTATION COMMISSION



105 WEST CAPITOL
JEFFERSON CITY, MO 65102
1-888-ASK-MODOT (1-888-275-6636)

IF A SEAL IS PRESENT ON THIS SHEET IT HAS BEEN ELECTRONICALLY SEALED AND DATED.



W020-1

02



G020-4

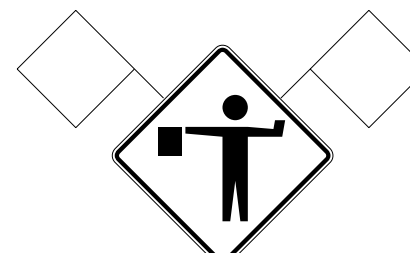
53

SIGN 53, "PILOT CAR FOLLOW ME" SHALL BE IN CONTRACTOR'S RESPONSIBILITY WHEN IN USE DURING OPERATION.



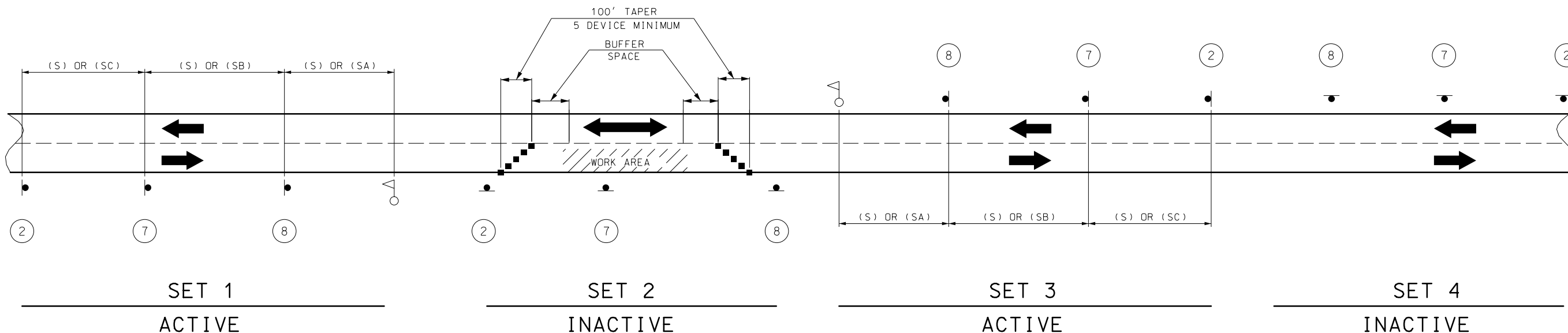
W020-4

07



W020-7a

08



SIGN SETS 1 AND 3 ARE ACTIVE AND (I.E., SIGNS FACE ONCOMING TRAFFIC).

SIGN SETS 2 AND 4 ARE INACTIVE (I.E., SIGNS DO NOT FACE EITHER DIRECTION OF TRAFFIC) WHEN THE RESURFACING OPERATION IS LOCATED BETWEEN SIGN SETS 1 AND 3.

WHEN SIGN SETS 2 AND 4 ARE ACTIVE, SIGN SETS 1 AND 3 BECOME INACTIVE AND ARE ADVANCED TO BECOME SETS 2 AND 4 WITH SIGN LEGENDS TURNED AWAY FROM BOTH DIRECTIONS OF TRAFFIC. WHEN THE RESURFACING OPERATION ADVANCES TO BETWEEN SIGN SETS 2 AND 4, SIGN SETS 2 AND 4 BECOME ACTIVE (I.E., NEW SIGN SETS 2 AND 4) AND SIGN SETS 1 AND 3 ADVANCED IN THE DIRECTION OF THE OPERATION (I.E., NEW SIGN SETS 2 AND 4).

■ - CHANNELIZERS

○ - FLAGGER

NOTES:

DAYLIGHT FLAGGING OPERATIONS ONLY.

FLAG ASSEMBLIES FOR SIGNS WILL BE PAID FOR AS EACH PER SIGN, EXCEPT FOR SIGN W020-7a WHICH IS SUBSIDIARY TO THE SIGN.

SPEED	SIGN SPACING (FT.) (1)	
	NON-DIVIDED HIGHWAYS (S)	DIVIDED HIGHWAYS (S)
0-35	200	200
40-45	350	500
50-55	500	1000
60-70	1000	(SA)-1000 (SB)-1500 (SC)-2640

PERMANENT POSTED SPEED LIMIT (MPH)	BUFFER SPACE LENGTH (FT)
0 - 35	280
40 - 45	400
50 - 55	560
60 - 70	840

NOTES:

(1) SPACING BETWEEN SIGNS, BETWEEN LAST SIGN AND FLAGGER, BEGINNING OF TAPER OR SIGNED CONDITION.

SPACINGS MAY BE ADJUSTED AS NECESSARY TO MEET FIELD CONDITIONS.

TRAFFIC CONTROL FOR
SEAL COAT AGGREGATE
APPLICATION
SHEET 2 OF 5

"THIS MEDIA SHOULD NOT BE CONSIDERED A CERTIFIED DOCUMENT."

DATE PREPARED
4/16/2019

ROUTE STATE
DISTRICT SHEET NO.
5

MO COUNTY

JOB NO.

CONTRACT ID.

PROJECT NO.

BRIDGE NO.

DESCRIPTION

DATE

MISSOURI HIGHWAYS AND TRANSPORTATION COMMISSION



105 WEST CAPITOL
JEFFERSON CITY, MO 65102
1-888-ASK-MODOT (1-888-275-6636)

REV.

