

# Alt. Pavement Update for Jobs Thru May 2007 with LCCA Factor

---

- 71 Alternate Projects to Date (\$930.5 mil)
  - 66 Full Depth (\$881.3 mil)
  - 5 Rehabilitation (\$59.7 mil)
- Full Depth
  - 25 Asphalt Awards (\$327.2 mil)
  - 40 Concrete Awards (\$543.7 mil)
- Rehabilitation
  - 1 Asphalt Award (\$2.6 mil)
  - 5 Concrete Awards (\$57.1 mil)

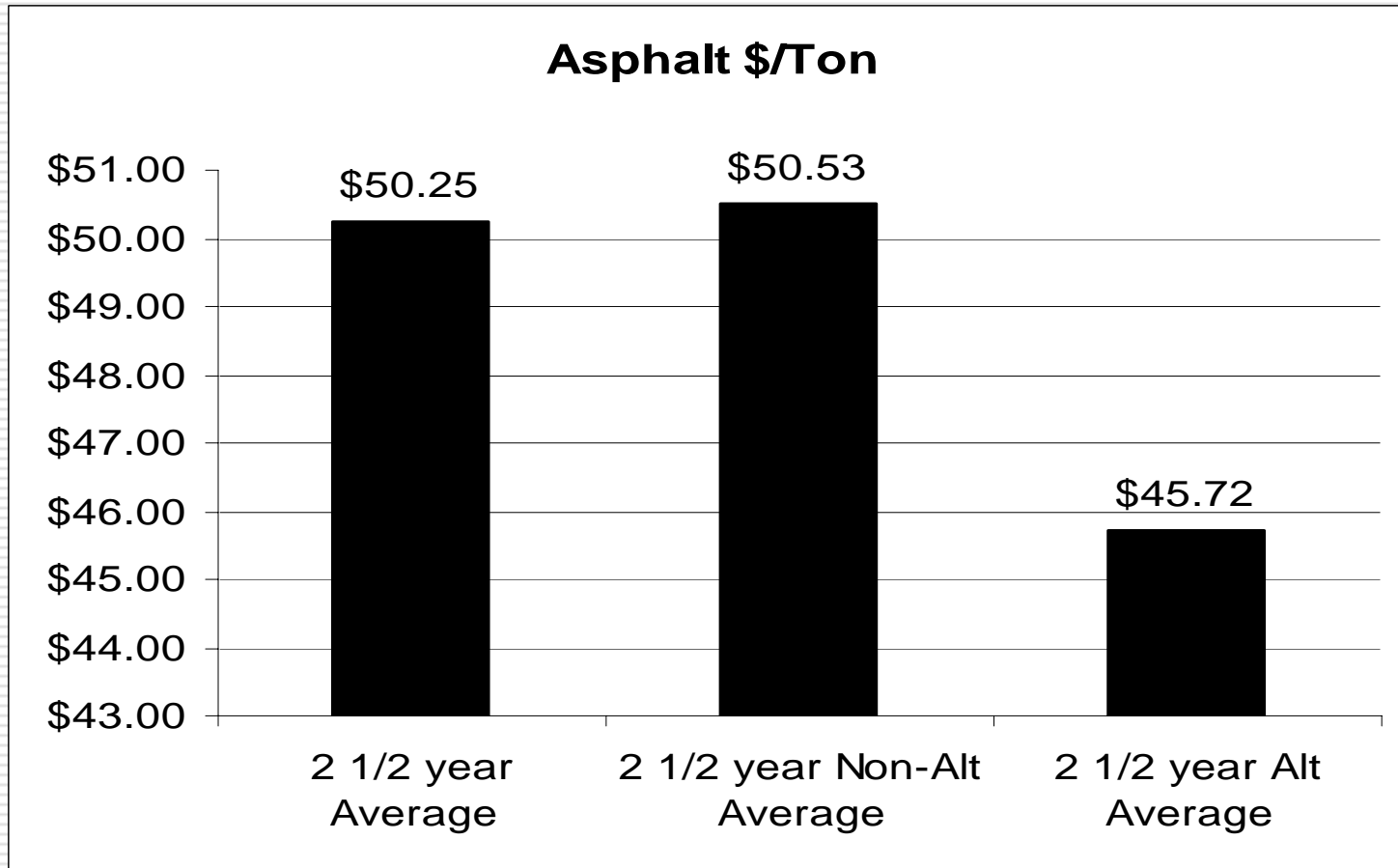
# Results – Difference in Low Bids

---

- Low PC Bids vs. Low AC Bids LCCA Factor not Applied
  - PC Total – \$455,916,795
  - AC Total - \$477,887,542
  - Difference - \$21,970,747 (4.8%)
- Low PC Bids vs. Low AC Bids LCCA Factor Applied
  - PC Total – \$455,916,795
  - AC Total - \$495,976,242
  - Difference - \$40,059,447 (8.8%)

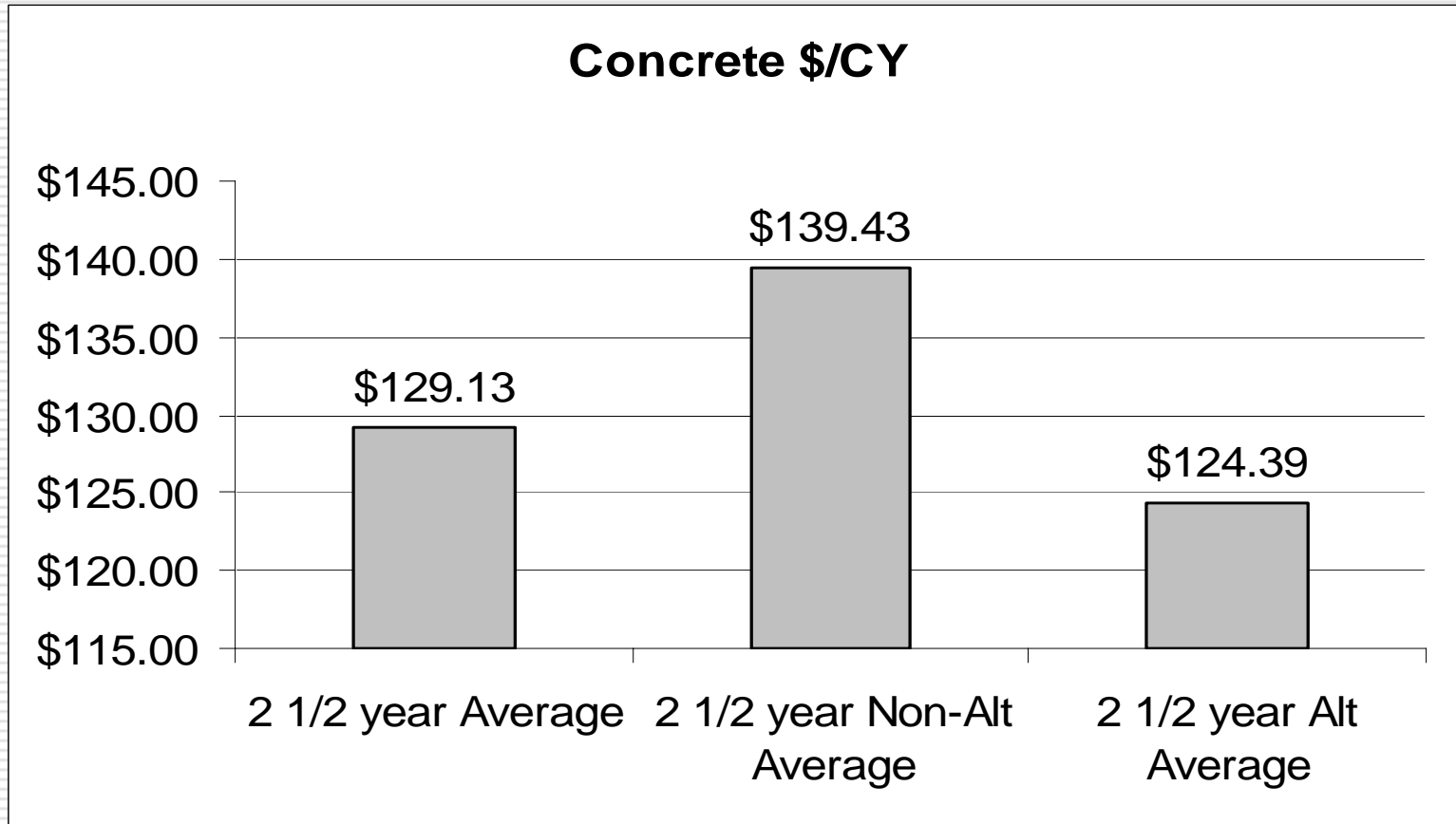
LCCA Factor has Determined Low Bid 2 Times since October 2003.

# Results – Over 2 Lane Miles



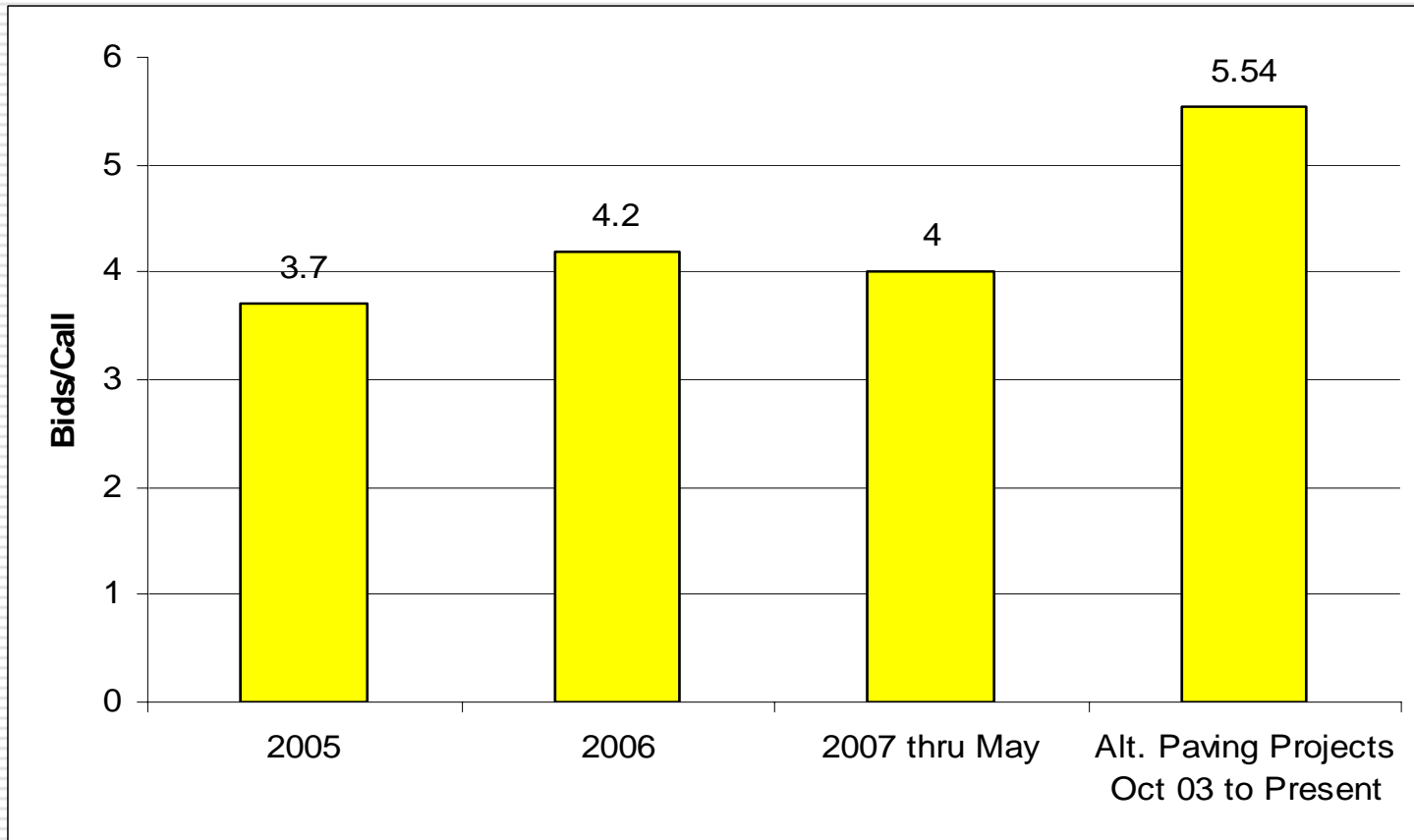
# Results – Over 2 Lane Miles

---



# Number of Bidders

---



# Other Facts

---

- ❑ 2 1/2-year Average asphalt price/ton for alternate paving projects is 9.0% below that for non-alternate projects and 9.5% below the 2 1/2-year average for all projects
- ❑ 2 1/2-year Average concrete price/CY for alternate paving projects is 10.8% below that for non-alternate projects and 3.7% below the 2 1/2-year average for all projects
- ❑ Optional pavement (no LCCA) for projects with less than 2-lane miles is standard where applicable