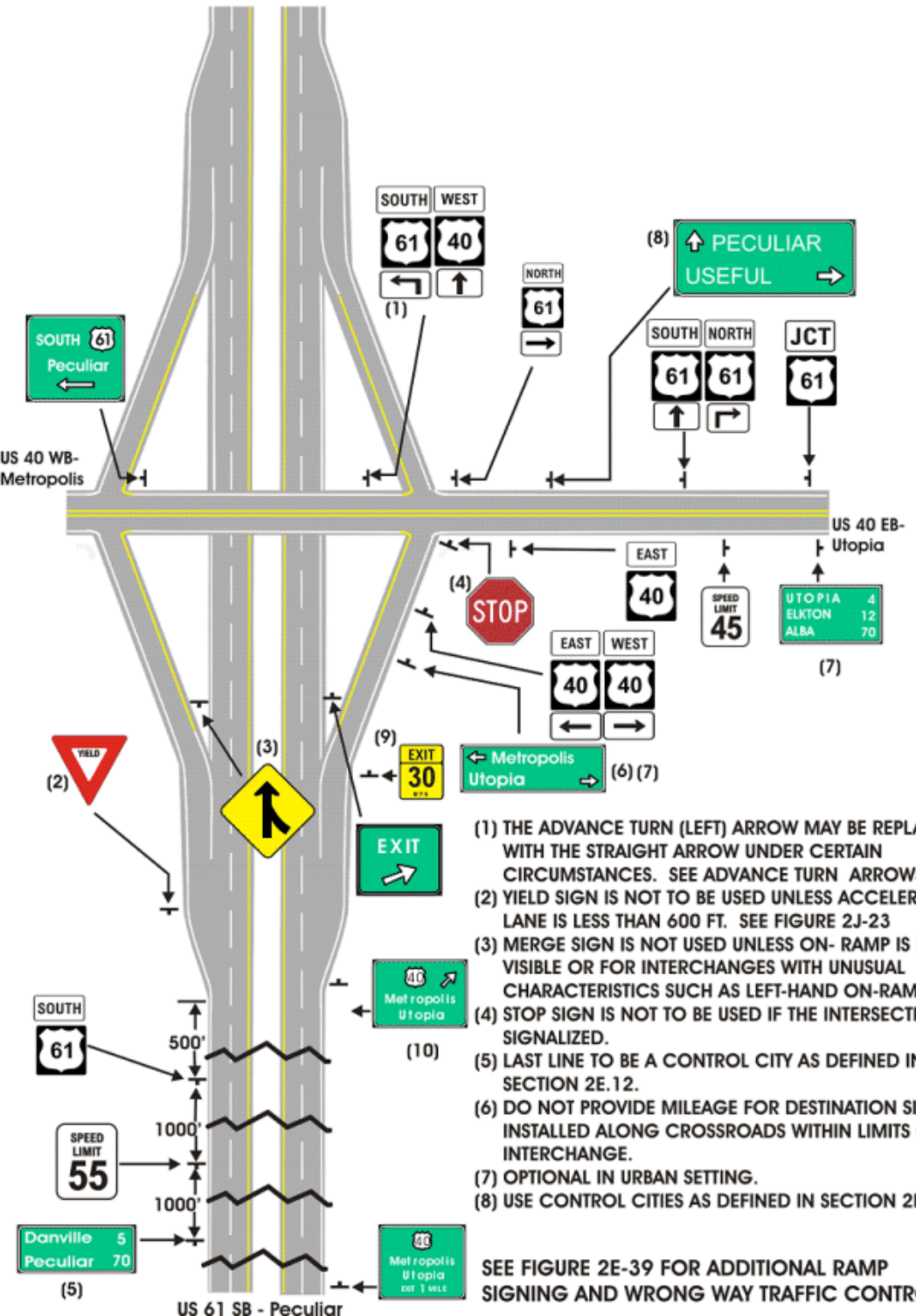


US 61 NB - Useful



- (1) THE ADVANCE TURN (LEFT) ARROW MAY BE REPLACED WITH THE STRAIGHT ARROW UNDER CERTAIN CIRCUMSTANCES. SEE ADVANCE TURN ARROWS.
- (2) YIELD SIGN IS NOT TO BE USED UNLESS ACCELERATION LANE IS LESS THAN 600 FT. SEE FIGURE 2J-23
- (3) MERGE SIGN IS NOT USED UNLESS ON- RAMP IS NOT VISIBLE OR FOR INTERCHANGES WITH UNUSUAL CHARACTERISTICS SUCH AS LEFT-HAND ON-RAMP.
- (4) STOP SIGN IS NOT TO BE USED IF THE INTERSECTION IS SIGNALIZED.
- (5) LAST LINE TO BE A CONTROL CITY AS DEFINED IN SECTION 2E.12.
- (6) DO NOT PROVIDE MILEAGE FOR DESTINATION SIGNS INSTALLED ALONG CROSSROADS WITHIN LIMITS OF AN INTERCHANGE.
- (7) OPTIONAL IN URBAN SETTING.
- (8) USE CONTROL CITIES AS DEFINED IN SECTION 2E.12.

SEE FIGURE 2E-39 FOR ADDITIONAL RAMP SIGNING AND WRONG WAY TRAFFIC CONTROL