

Multi-line Reports

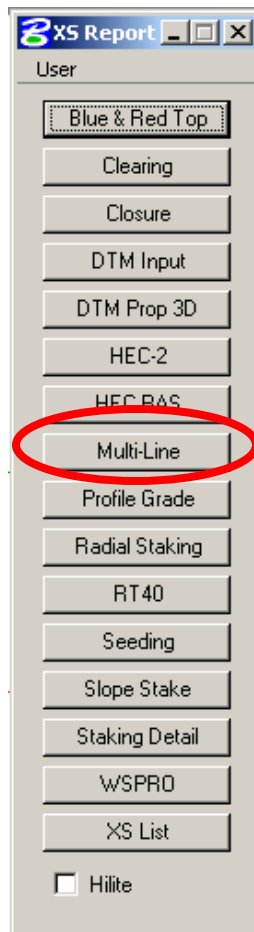
1. Open the Microstation file containing the Geopak cross sections.

2. Select Geopak Cross Section Reports from the Cross Section tool pallet as shown below



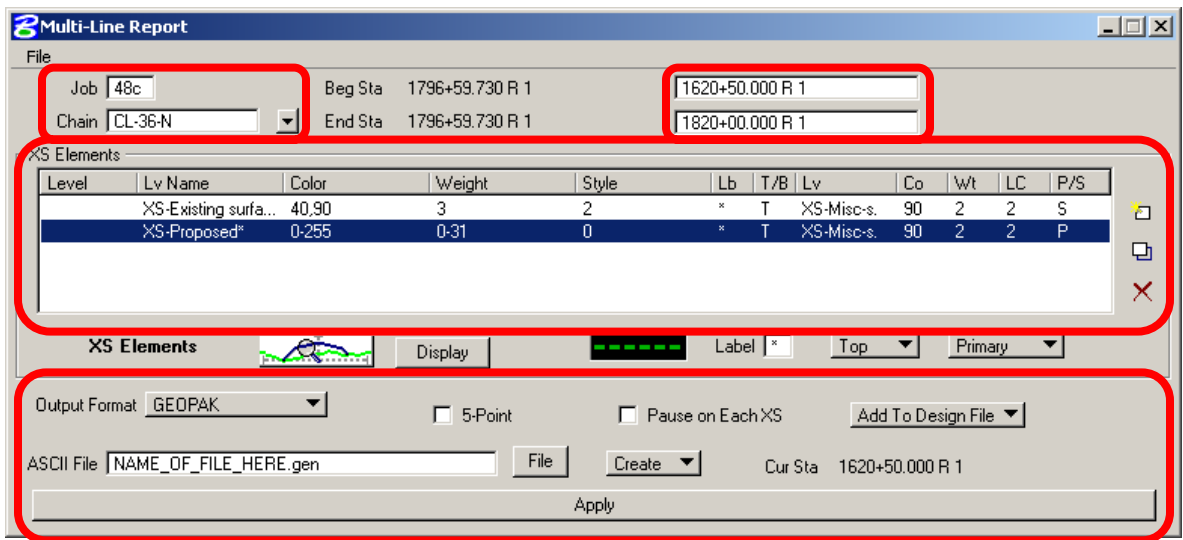
3. Or by pull down menu: **Applications >>Geopak Road >>Cross Sections >> Reports**

4. Select **XS List** from the XS Reports dialog.



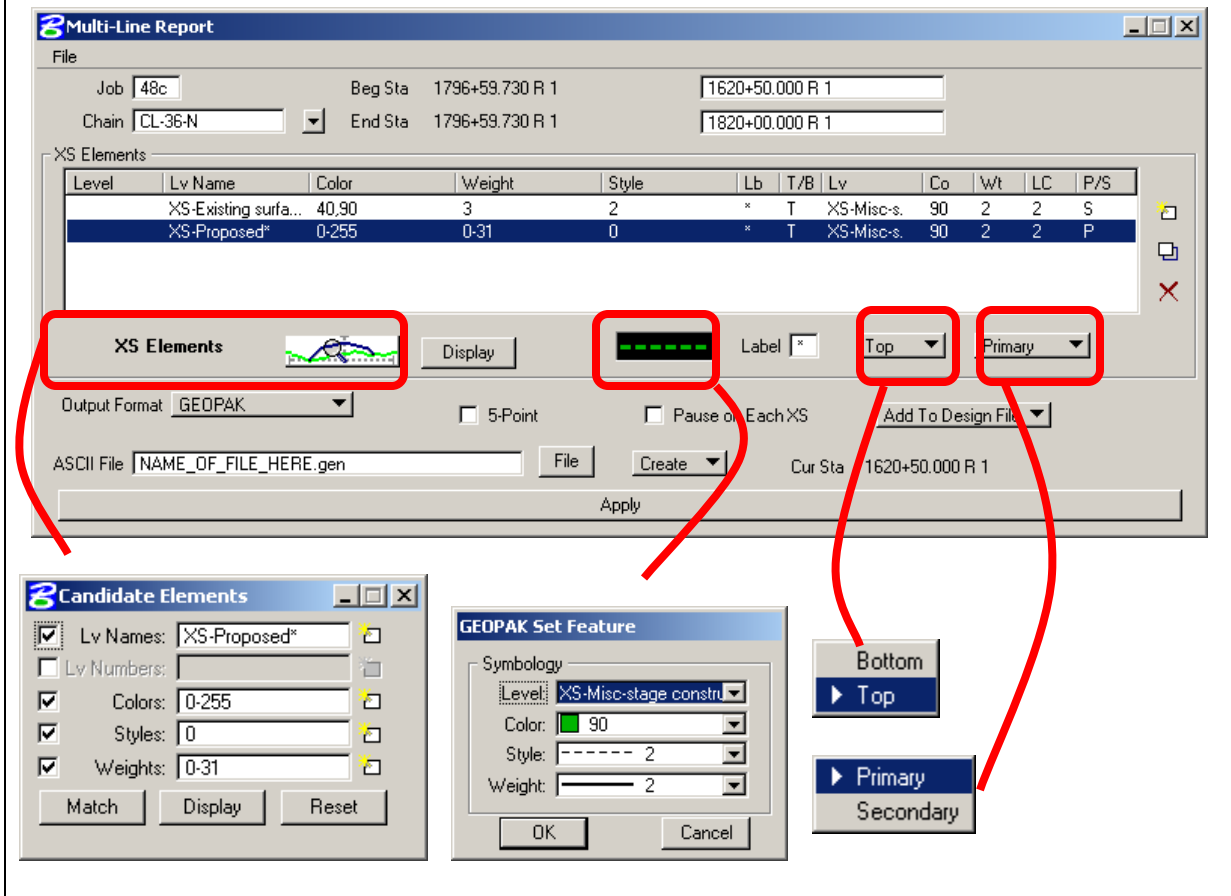
YOU ONLY NEED ONE REPORT PER CROSS SECTION FILE

5. Populate the dialog as follow:
 - a. GPK name or number
 - b. Select the chain for which the cross section cells were created
 - c. Type in your station ranges
 - d. Set up 2 XS Element lines, one for the existing ground and one for the proposed template. (Next step explains how to set this up)
 - e. Set up the Output Format



SEE NEXT PAGE FOR MORE INSTRUCTIONS

6. Set up the XS Elements for your existing ground line first and then add the proposed ground line symbology.
 - a. Single click on the XS Elements preview box to select the symbology according to your cross section lines
 - b. Double click on the line preview box to select the symbology you are wanting Geopak to place all “new elements” (basically the combined “as-built” cross section, which includes both the original existing ground and the designed template).
 - c. Select the Top for both layers, this will help Geopak decide which layer to follow always the most top layer when scanning the cross section.
 - d. Select “secondary” for the existing ground line, and “primary” for the proposed template. This allows Geopak to connect the existing ground line to the proposed ground line.



SEE NEXT PAGE FOR MORE INSTRUCTIONS

7. Finally, set up the Output Format.
 - a. Select Output Format to be “GEOPAK”
 - b. The extension for this report is *.gen
 - c. Select Create if you are creating the report for the first time, or Append if you are appending to an existing report.
 - d. Select “Add to Design File” if you want the “scanned template” to be drawn on your Microstation file. Notice, we set the symbology on to be placed on level “XS-Misc-stage construction”.
 - e. Select Apply. The file will be placed in your working directory.

