

# MISSOURI HIGHWAYS AND TRANSPORTATION COMMISSION

## PLANS FOR PROPOSED STATE HIGHWAY

### INDEX OF SHEETS

DESCRIPTION	SHEET NUMBER
TITLE SHEET -----	1
TYPICAL SECTIONS (TS) (1 SHEET)-----	2
QUANTITIES (QU) (1 SHEET)-----	3
TRAFFIC CONTROL (TC)(4 SHEETS)-----	4-7

"THIS MEDIA SHOULD NOT BE CONSIDERED A CERTIFIED DOCUMENT."

DATE PREPARED  
10/4/2011

ROUTE	STATE
	MO

DISTRICT	SHEET NO.
	1

COUNTY

JOB NO.

CONTRACT ID.

PROJECT NO.

BRIDGE NO.

DATE	DESCRIPTION

### LENGTH OF PROJECT

BEGINNING OF PROJECT \_\_\_\_\_

END OF PROJECT \_\_\_\_\_

APPARENT LENGTH \_\_\_\_\_ MILES

EQUATIONS AND EXCEPTIONS:

TOTAL CORRECTIONS \_\_\_\_\_

NET LENGTH OF PROJECT \_\_\_\_\_

STATE LENGTH \_\_\_\_\_

MISSOURI HIGHWAYS AND TRANSPORTATION COMMISSION

105 WEST CAPITOL  
JEFFERSON CITY, MO 65102  
1-888-ASK-MODOT (1-888-275-6636)

IF A SEAL IS PRESENT ON THIS SHEET IT HAS BEEN ELECTRONICALLY SEALED AND DATED.

"THIS MEDIA SHOULD NOT BE CONSIDERED A CERTIFIED DOCUMENT."

DATE PREPARED  
9/14/2011

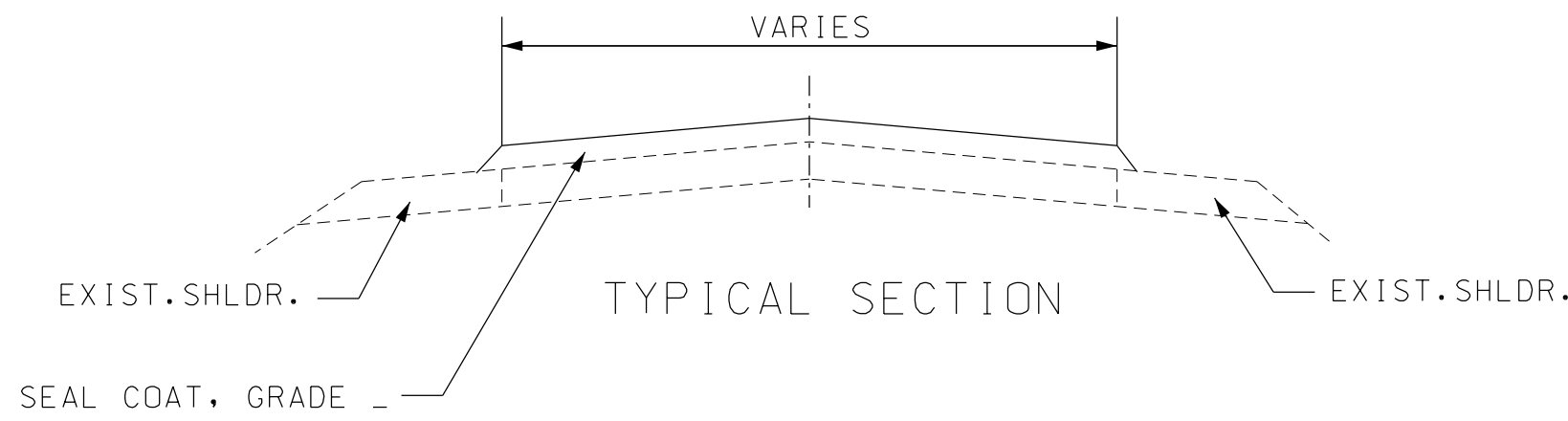
ROUTE	STATE
DISTRICT	SHEET NO.
COUNTY	
JOB NO.	
CONTRACT ID.	
PROJECT NO.	
BRIDGE NO.	

DESCRIPTION	DATE

MISSOURI HIGHWAYS AND TRANSPORTATION COMMISSION



105 WEST CAPITOL  
JEFFERSON CITY, MO 65102  
1-888-ASK-MODOT (1-888-275-6636)



STRIPING TO BE COMPLETED BY OTHERS.  
NOTIFY ENGINEER TWO WEEKS PRIOR TO PROJECT COMPLETION

TYPICAL SECTION  
SHEET 1 OF 1

# MISSOURI HIGHWAYS AND TRANSPORTATION COMMISSION

## SUMMARY OF QUANTITIES

"THIS MEDIA SHOULD NOT BE CONSIDERED A CERTIFIED DOCUMENT."

DATE PREPARED  
10/5/2011

ROUTE STATE  
DISTRICT SHEET NO.  
3 MO

COUNTY

JOB NO.

CONTRACT ID.

PROJECT NO.

BRIDGE NO.

### CONSTRUCTION SIGNING

SIGN NO.	SIGN	SIZE (in.)	AREA (ft. <sup>2</sup> )	QTY.	TOTAL AREA (ft. <sup>2</sup> )	DESCRIPTION
②**	W020-1	48 x 48	16.00	X	XXX	ROAD WORK AHEAD
⑦	W020-4	48 x 48	16.00	8	128	ONE LANE ROAD AHEAD
⑧	W020-7a	48 x 48	16.00	8	128	FLAGGER (SYMBOL) (WITH FLAGS)
①*	G020-1	60 x 24	10.00	2	20	ROAD WORK NEXT XX MILES ① 2-XX MILES
②6	G020-2a	48 x 24	8.00	2	16	END ROAD WORK
③5	W08-12	36 x 36	9.00	X	XX.XX	NO CENTER STRIPE
⑤3	G020-4	36 x 18	4.5	X	XX.XX	PILOT CAR FOLLOW ME
⑥6	SPECIAL	36 x 36	9.00	X	XX.XX	FRESH OIL LOOSE GRAVEL
⑥8	G020-4a	42 x 30	8.75	X	XX.XX	PLEASE WAIT FOR PILOT CAR
⑥	W03-4	48 x 48	16.00	4	XX.XX	BE PREPARED TO STOP
616-10.05 CONSTRUCTION SIGNS TOTAL					XXX.XX	

FLAG ASSEMBLIES	
QUANTITY EACH	REMARKS
TOTAL	

\* IF LESS THAN TWO (2) MILES, DELETE SIGN NO. 1.

\*\* ADDITIONAL SIGN NO. 2 USED AS SHOWN ON TRAFFIC CONTROL SHEET 2 OF 3 AND AS DIRECTED BY ENGINEER.

NOTE:

REFER TO STANDARD PLAN 616.10 AND 903.03 FOR SIGN AND SIGN MOUNTING REQUIREMENTS.

ITEM NO.	QTY.	DESCRIPTION
616-11.20	2	INSTALLATION OF 48" X 48" "DRIVE SMART SIGN"

### TEMPORARY RAISED PAVEMENT MARKER, TYPE 1 WITH COVERS

LOG MILE	LOG MILE	QUANTITY EACH	REMARKS
TOTAL			

NOTE: FINAL STRIPING DONE BY OTHERS.

### SEAL COAT QUANTITIES

LOG MILE	LOG MILE	NET LENGTH MILES	AVERAGE WIDTH FEET	SEAL COAT, GRADE - SY	REMARKS
TOTALS					

DESCRIPTION

DATE

MISSOURI HIGHWAYS AND TRANSPORTATION COMMISSION



IF A SEAL IS PRESENT ON THIS SHEET IT HAS BEEN ELECTRONICALLY SEALED AND DATED.

"THIS MEDIA SHOULD NOT BE CONSIDERED A CERTIFIED DOCUMENT."

DATE PREPARED  
10/4/2011

ROUTE STATE  
DISTRICT SHEET NO.  
MO  
4

COUNTY

JOB NO.

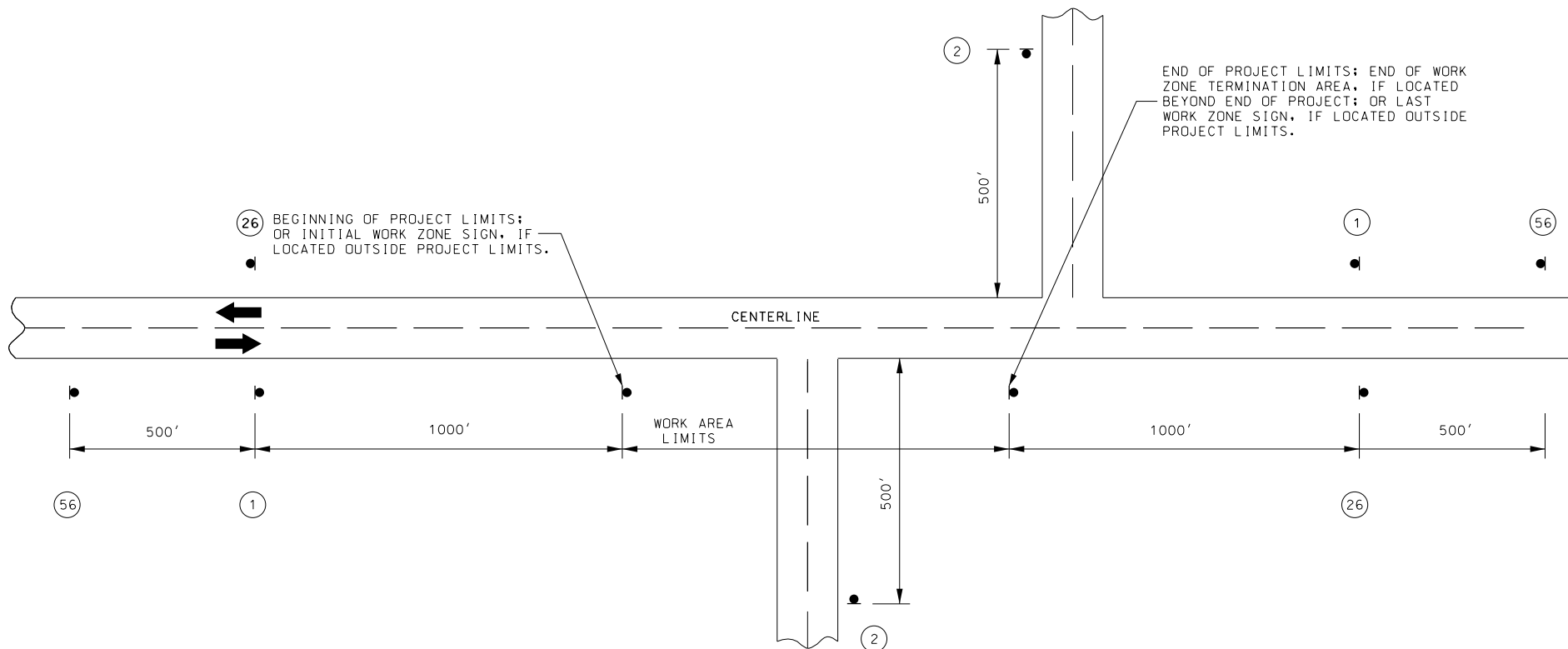
CONTRACT ID.

PROJECT NO.

BRIDGE NO.

DESCRIPTION	DATE

IF A SEAL IS PRESENT ON THIS SHEET IT HAS BEEN ELECTRONICALLY SEALED AND DATED.



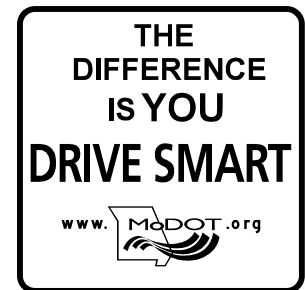
NOTES:

SIGN 1 IS ONLY USED ON PROJECT LENGTHS 2 MILES OR GREATER.

SIGN 26 MAY BE USED ON PROJECTS LESS THAN 2 MILES.

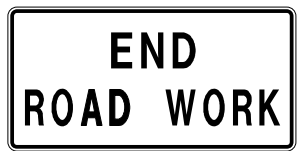
PROVIDE SIGNS IN EACH DIRECTION ON TWO-WAY HIGHWAY.

DISTANCE MAY BE ADJUSTED ACCORDING TO FIELD CONDITIONS.



CONST-6-48

56



G020-2a

26



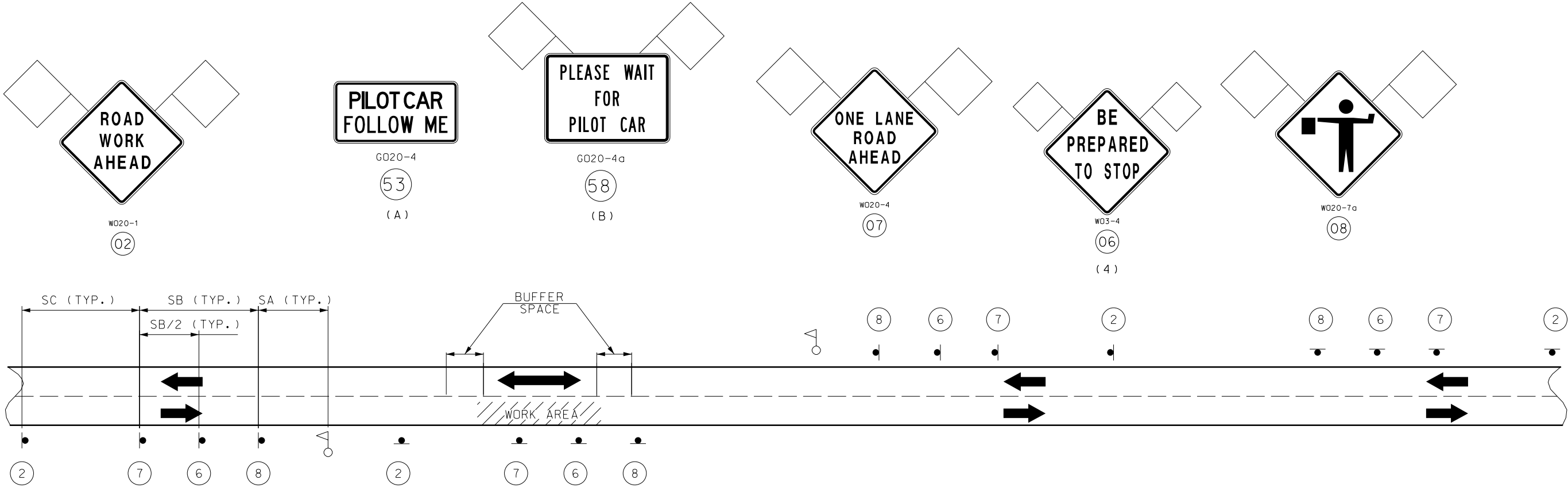
G020-1

01



WD20-1

02



**SET 1  
ACTIVE**

SIGN SETS 1 AND 3 ARE ACTIVE AND (I.E., SIGNS FACE ONCOMING TRAFFIC).

SIGN SETS 2 AND 4 ARE INACTIVE (I.E., SIGNS DO NOT FACE EITHER DIRECTION OF TRAFFIC) WHEN THE RESURFACING OPERATION IS LOCATED BETWEEN SIGN SETS 1 AND 3.

WHEN SIGN SETS 2 AND 4 ARE ACTIVE, SIGN SETS 1 AND 3 BECOME INACTIVE AND ARE ADVANCED TO BECOME SETS 2 AND 4 WITH SIGN LEGENDS TURNED AWAY FROM BOTH DIRECTIONS OF TRAFFIC. WHEN THE RESURFACING OPERATION ADVANCES TO BETWEEN SIGN SETS 2 AND 4, SIGN SETS 2 AND 4 BECOME ACTIVE (I.E., NEW SIGN SETS 1 AND 3) AND SIGN SETS 1 AND 3 ADVANCED IN THE DIRECTION OF THE OPERATION (I.E., NEW SIGN SETS 2 AND 4).

- FLAGGER

**NOTES:**

DAYLIGHT FLAGGING OPERATIONS ONLY.

FLAG ASSEMBLIES FOR SIGNS WILL BE PAID FOR AS EACH PER SIGN, EXCEPT FOR SIGN W020-7A WHICH IS SUBSIDIARY TO THE SIGN.

**SET 2  
INACTIVE**

**SET 3  
ACTIVE**

**SET 4  
INACTIVE**

(A) SIGN 53 , "PILOT CAR FOLLOW ME" SHALL BE IN CONTRACTOR'S RESPONSIBILITY WHEN IN USE DURING OPERATION.

(B) FOR PLACEMENT OF SIGN 58 , SEE SHEET 6.

SIGN SPACING FOR ADVANCE SIGN SERIES (2) (3)		
SPEED (1) MPH	NON-DIVIDED HIGHWAYS	DIVIDED HIGHWAYS
0 - 35	200	200
40 - 45	350	500
50 - 55	500	1000
60 - 70	SA - 1000 FT. SB - 1500 FT. AND SC - 2640 FT.	

**NOTES:**

DIMENSIONS IN FEET UNLESS OTHERWISE NOTED.

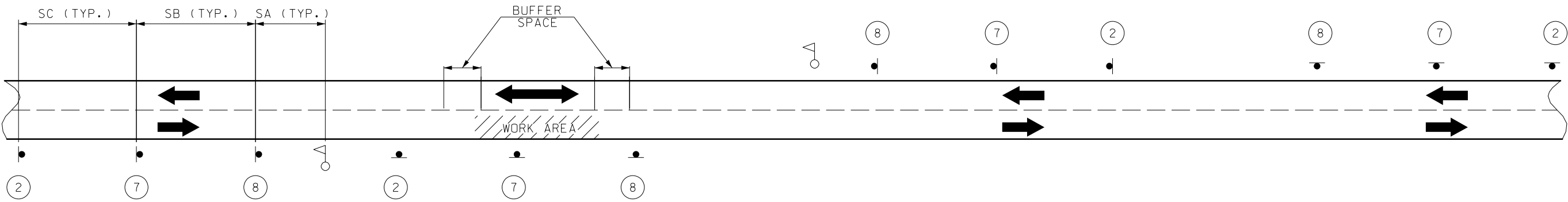
(1) POSTED SPEED LIMIT PRIOR TO ROAD WORK.

(2) SPACING BETWEEN SIGNS, BETWEEN LAST SIGN AND FLAGGER, BEGINNING OF TAPER OR SIGNED CONDITION.

(3) SPACINGS MAY BE ADJUSTED AS NECESSARY TO MEET FIELD CONDITIONS.

(4) SIGN MANDATORY WHEN TEMPORARY ROAD CLOSURE IS NEEDED. FOR TEMPORARY ROAD CLOSURE BOTH DIRECTIONS MAY BE STOPPED AT THE SAME TIME UP TO A MAXIMUM OF 20 MINUTES.

"THIS MEDIA SHOULD NOT BE CONSIDERED A CERTIFIED DOCUMENT."  
 DATE PREPARED: 10/4/2011  
 ROUTE: \_\_\_\_\_ STATE: MO  
 DISTRICT: \_\_\_\_\_ SHEET NO.: 5  
 COUNTY: \_\_\_\_\_  
 JOB NO.: \_\_\_\_\_  
 CONTRACT ID.: \_\_\_\_\_  
 PROJECT NO.: \_\_\_\_\_  
 BRIDGE NO.: \_\_\_\_\_  
 DESCRIPTION: \_\_\_\_\_  
 DATE: \_\_\_\_\_  
 MISSOURI HIGHWAYS AND TRANSPORTATION COMMISSION  
 105 WEST CAPITOL JEFFERSON CITY, MO 65102  
 1-888-ASK-MODOT (1-888-275-6636)  
 MODOT  
 IF A SEAL IS PRESENT ON THIS SHEET IT HAS BEEN ELECTRONICALLY SEALED AND DATED.  
 REV.



SET 1  
ACTIVE

SET 2  
INACTIVE

SET 3  
ACTIVE

SET 4  
INACTIVE

SIGN SETS 1 AND 3 ARE ACTIVE AND (I.E., SIGNS FACE ONCOMING TRAFFIC).

SIGN SETS 2 AND 4 ARE INACTIVE (I.E., SIGNS DO NOT FACE EITHER DIRECTION OF TRAFFIC) WHEN THE RESURFACING OPERATION IS LOCATED BETWEEN SIGN SETS 1 AND 3.

WHEN SIGN SETS 2 AND 4 ARE ACTIVE, SIGN SETS 1 AND 3 BECOME INACTIVE AND ARE ADVANCED TO BECOME SETS 2 AND 4 WITH SIGN LEGENDS TURNED AWAY FROM BOTH DIRECTIONS OF TRAFFIC. WHEN THE RESURFACING OPERATION ADVANCES TO BETWEEN SIGN SETS 2 AND 4, SIGN SETS 2 AND 4 BECOME ACTIVE (I.E., NEW SIGN SETS 2 AND 3) AND SIGN SETS 1 AND 3 ADVANCED IN THE DIRECTION OF THE OPERATION (I.E., NEW SIGN SETS 2 AND 4).

- FLAGGER

NOTES:

DAYLIGHT FLAGGING OPERATIONS ONLY.

FLAG ASSEMBLIES FOR SIGNS WILL BE PAID FOR AS EACH PER SIGN, EXCEPT FOR SIGN W020-7A WHICH IS SUBSIDIARY TO THE SIGN.

SIGN SPACING FOR ADVANCE SIGN SERIES (2) (3)		
SPEED (1) MPH	NON-DIVIDED HIGHWAYS	DIVIDED HIGHWAYS
0 - 35	200	200
40 - 45	350	500
50 - 55	500	1000
60 - 70	SA - 1000 FT. SB - 1500 FT. AND SC - 2640 FT.	

NOTES:

DIMENSIONS IN FEET UNLESS OTHERWISE NOTED.

(1) POSTED SPEED LIMIT PRIOR TO ROAD WORK.

(2) SPACING BETWEEN SIGNS, BETWEEN LAST SIGN AND FLAGGER, BEGINNING OF TAPER OR SIGNED CONDITION.

(3) SPACINGS MAY BE ADJUSTED AS NECESSARY TO MEET FIELD CONDITIONS.

"THIS MEDIA SHOULD NOT BE CONSIDERED A CERTIFIED DOCUMENT."  
 DATE PREPARED: 10/4/2011  
 ROUTE: STATE MO  
 DISTRICT: SHEET NO. 6  
 COUNTY:  
 JOB NO.:  
 CONTRACT ID.:  
 PROJECT NO.:  
 BRIDGE NO.:  
 DESCRIPTION:  
 DATE:  
 MISSOURI HIGHWAYS AND TRANSPORTATION COMMISSION  
 105 WEST CAPITOL JEFFERSON CITY, MO 65102  
 1-888-ASK-MODOT (1-888-275-6636)  
 MoDOT  
 IF A SEAL IS PRESENT ON THIS SHEET IT HAS BEEN ELECTRONICALLY SEALED AND DATED.  
 REV.

"THIS MEDIA SHOULD NOT BE CONSIDERED A CERTIFIED DOCUMENT."

DATE PREPARED  
10/4/2011

ROUTE STATE  
DISTRICT SHEET NO.  
MO 7

COUNTY

JOB NO.

CONTRACT ID.

PROJECT NO.

BRIDGE NO.

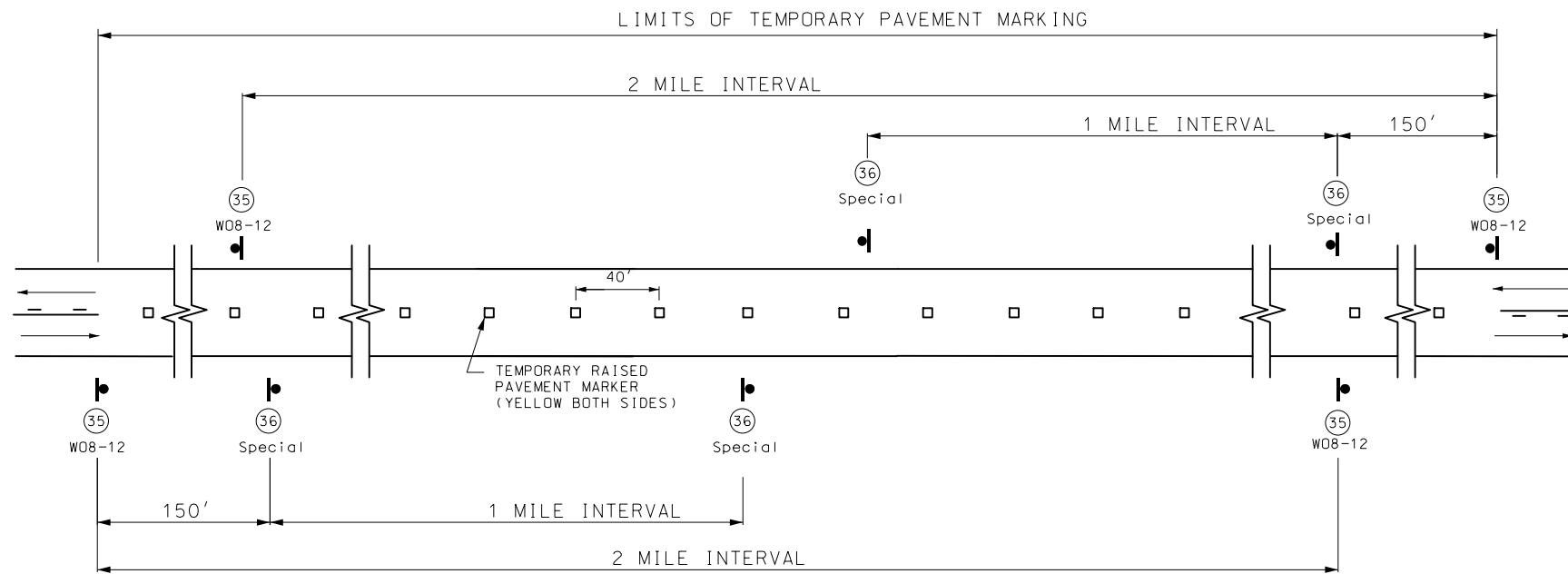
DESCRIPTION

DATE

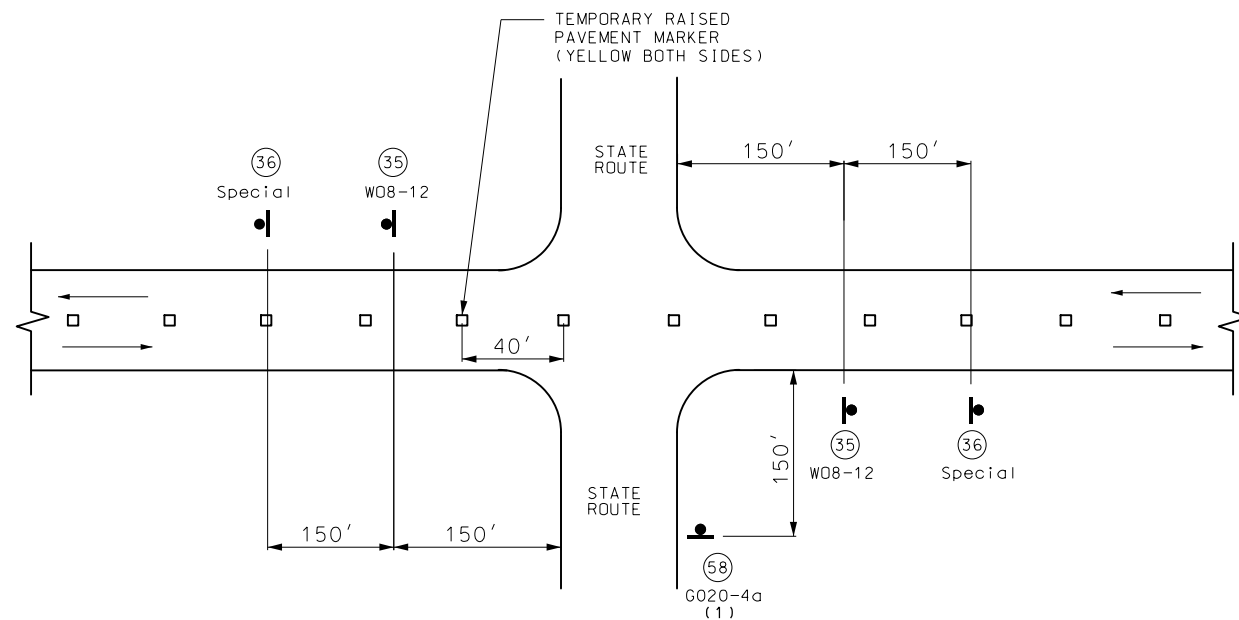
MISSOURI HIGHWAYS AND TRANSPORTATION COMMISSION

105 WEST CAPITOL  
JEFFERSON CITY, MO 65102  
1-888-ASK-MODOT (1-888-275-6636)

REV.

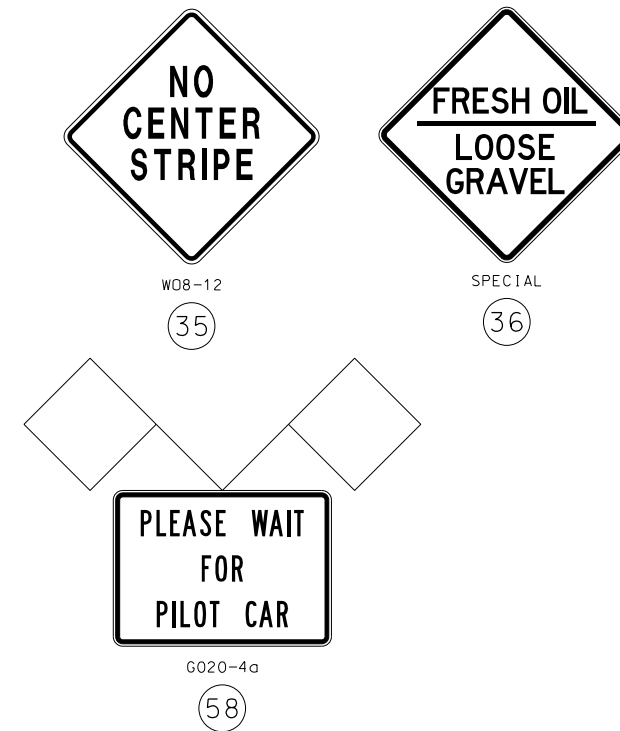


### SIGN SPACING FOR MAINLINE



### SIGN SPACING AT STATE ROUTE INTERSECTIONS

(1) ADDITIONAL SIDEROADS MAY BE SIGNED AS DIRECTED BY THE ENGINEER.



**NOTES:**

SIGN (35) AND TEMPORARY PAVEMENT MARKING INSTALLED WHERE CENTERLINE STRIPING HAS BEEN COVERED OR REMOVED. SIGNS ARE TO REMAIN IN PLACE UNTIL THE PERMANENT CENTERLINE PAVEMENT MARKINGS ARE IN PLACE. SIGNS SHALL BE COVERED OR REMOVED WHEN PAVEMENT CENTERLINE MARKING HAS BEEN INSTALLED.

SIGN (35) IS PLACED AT APPROXIMATELY TWO-MILE INTERVALS AND AT STATE ROUTE JUNCTIONS. WHEN THE INSTALLATION AT A JUNCTION IS WITHIN ONE-EIGHTH MILE OF THE NORMAL MAINLINE SIGN (35), THE LATTER MAY BE ELIMINATED.

ALL SIGNS SHALL BE POST MOUNTED AND IN ACCORDANCE WITH STANDARD PLAN 616.10 AND 903.03.

TEMPORARY RAISED PAVEMENT MARKERS TYPE 1 WITH COVERS SHALL BE INSTALLED PRIOR TO APPLICATION OF SEAL COAT.