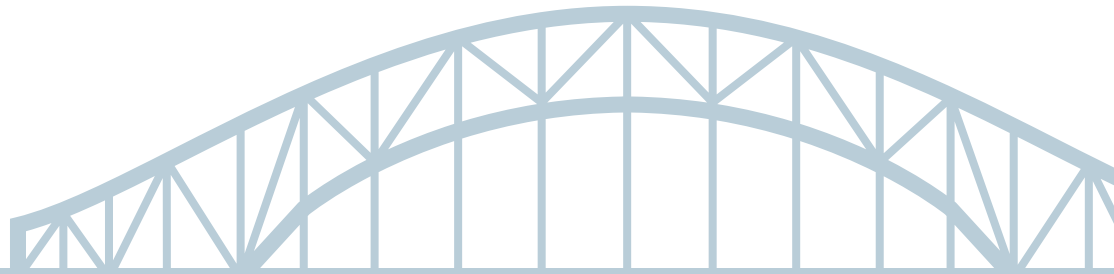


# MoDOT Asset Management Plan

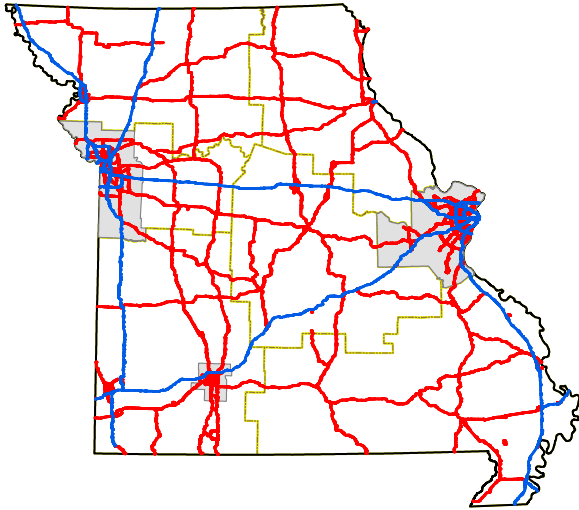
## 2018 Summary

MoDOT has adopted an asset management approach to make the best decisions with transportation investments. The goal of the plan is to keep roads and bridges in good condition for as long as possible given current funding levels. The plan also clearly demonstrates the investment level needed in order to maintain the system at its current condition.



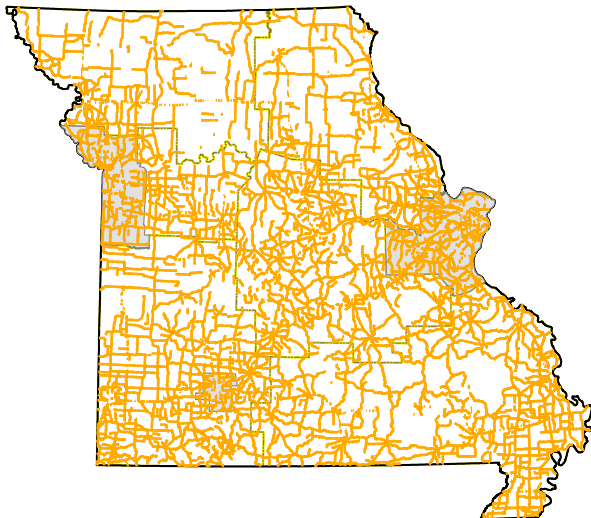
# Missouri's 33,859 Miles of Roads

## MAJOR ROUTES



- **Major Route System**
  - 5,546 miles = 16% of System
  - Travel total = 76%
  - Pavement condition goal = 90% Good
  - Current pavement condition = 92% Good
- **Costs**
  - \$113,200/lane mile
  - Total yearly pavement cost = \$221 million
- **Pavement Treatment**
  - Miles treated per year = 1,953 lane miles
  - Treatment cycle = 8 years
  - Work done by contractors

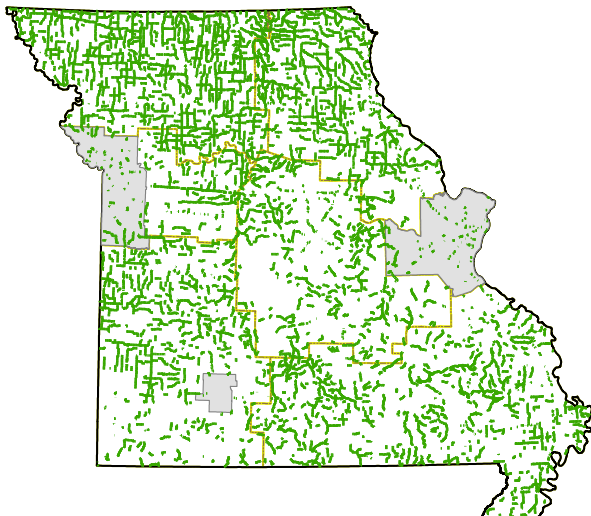
## MINOR ROUTES



- **Minor Route System**
  - 17,166 miles = 51% of System
  - Travel total = 22%
  - Pavement condition goal = 80% Good\*
  - Current pavement condition = 81% Good
- **Costs**
  - \$35,100/lane mile
  - Total yearly pavement cost = \$103 million
- **Pavement Treatment**
  - Miles treated per year = 2,936 lane miles
  - Treatment cycle = 8 years
  - Work done by contractors

\*based on current funding levels

## LOW VOLUME ROUTES



- **Low Volume Route System**
  - Maintained by MoDOT Maintenance
  - 11,147 miles = 33% of System
  - Travel total = 2%
  - Pavement condition goal = 70% Good\*
  - Current pavement condition = 73% Good
- **Costs**
  - Total yearly pavement cost = \$24 million
- **Pavement Treatment by MoDOT Maintenance**

\*based on current funding levels

# Missouri's 10,385 Bridges

## Typical Bridges (<1,000 feet in length)



### Number of typical bridges: 10,177

- **Costs:**
  - Replacement = \$279/square foot
  - Redeck = \$89/square foot
  - Preventive Maintenance/Rehabilitation = \$35 square foot
- **Total Yearly Cost for Typical Bridges = \$169 million**
  - Replacement = \$95 million
  - Redeck = \$20 million
  - Preventive Maintenance/Rehabilitation = \$54 million
- **Treatment Type (% of work by square feet)**
  - Replacement = 16%
  - Redeck = 11%
  - Preventive Maintenance/Rehabilitation = 73%

## Major Bridges (≥1,000 feet in length)



### Number of major bridges: 208

- **Treatment Type (% of work by dollar amount)**
  - Replacement = 55%
  - Repair = 45%
- **100 Major Bridges getting work done over next 10 years**
- **For more detailed information on Major Bridge work, please visit [epg.modot.org/files/9/99/121.5.5\\_needs.pdf](http://epg.modot.org/files/9/99/121.5.5_needs.pdf)**

### Overall Bridge Goal

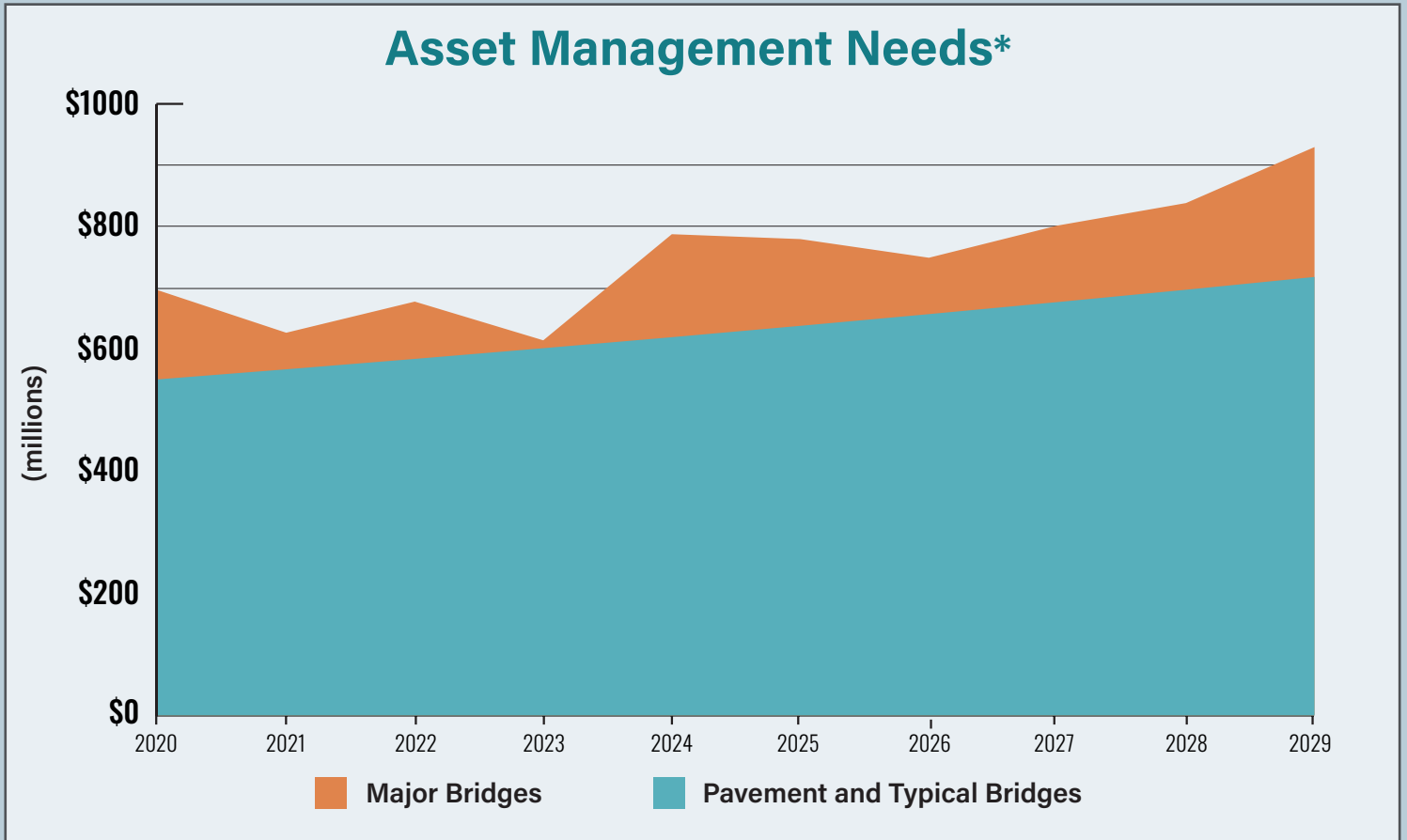
- **Typical and Major Bridges:**
  - < 900 Poor Condition Bridges (at current funding level)
- **Currently: 922 Poor Condition Bridges**

## COSTS (MILLIONS):

### Major Bridge Costs - Inflated

	2020	2021	2022	2023	2024	2025	2026	2027	2028	2029	Totals
NW	7.3	0.0	5.1	0.0	2.5	61.5	0.0	0.0	16.1	0.0	92.5
NE	0.0	0.0	3.9	0.0	0.0	0.0	13.9	0.0	67.2	0.0	85.1
KCR	0.0	0.0	0.0	0.0	0.0	0.0	0.0	0.0	7.1	0.0	7.1
KCU	106.1	4.8	0.0	0.0	35.8	12.9	7.6	78.3	0.0	70.6	316.1
CD	19.1	8.0	0.3	0.0	0.0	0.0	0.0	0.0	0.0	0.0	27.4
SL	4.2	44.8	41.6	10.6	130.1	56.1	20.0	36.1	51.3	141.8	536.5
SWR	6.9	2.1	42.8	0.0	0.0	0.7	0.0	2.9	0.0	0.0	55.4
SWU	0.0	0.0	0.0	0.0	0.0	0.0	0.0	0.0	0.0	0.0	0.0
SE	2.3	0.0	0.0	2.3	0.0	10.6	50.7	7.8	0.0	0.0	73.7
<b>Totals</b>	<b>145.9</b>	<b>59.8</b>	<b>93.7</b>	<b>12.9</b>	<b>168.4</b>	<b>141.8</b>	<b>92.2</b>	<b>125.1</b>	<b>141.7</b>	<b>212.4</b>	<b>1193.9</b>

Asset Management 10-year funding needs are shown in the figure below. Pavement and Typical Bridge costs are determined for the first year and inflation is applied every year thereafter. Major Bridge costs vary from year to year.



\*Does not include costs for low volume route pavements.

\*Does not include engineering costs.

\*Includes mobility and ADA costs.

\*Only includes short term rehabilitation funding for Rocheport and Buck O'Neil bridges.

For more information on MoDOT's Asset Management Plan, please visit MoDOT's Engineering Policy Guide at [epg.modot.org/index.php/121.5\\_Asset\\_Management](http://epg.modot.org/index.php/121.5_Asset_Management) (EPG 121.5 Asset Management).

