



W020-1

02



G020-4

53

SIGN 53, "PILOT CAR FOLLOW ME" SHALL BE IN CONTRACTOR'S RESPONSIBILITY WHEN IN USE DURING OPERATION.



W020-4

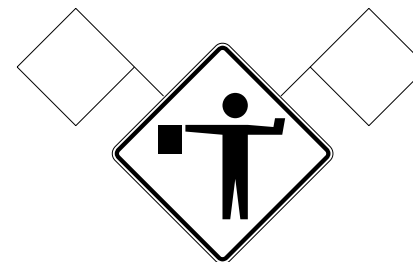
07



W03-4

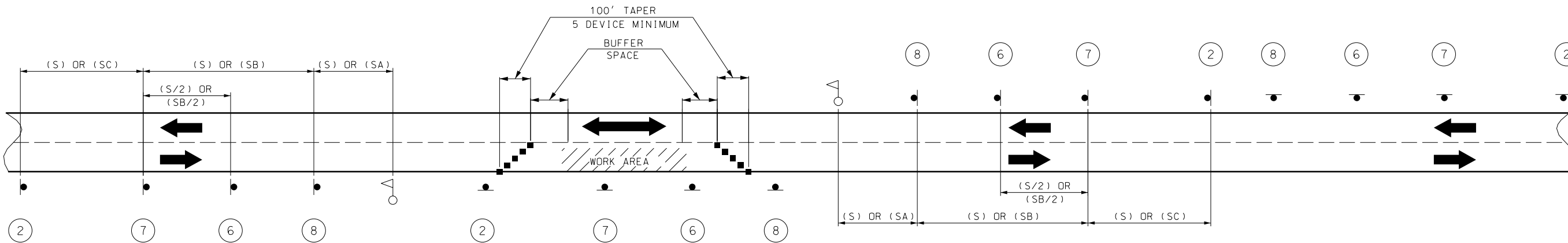
06

(2)



W020-7a

08



SET 1
ACTIVE

SET 2
INACTIVE

SET 3
ACTIVE

SET 4
INACTIVE

SIGN SETS 1 AND 3 ARE ACTIVE AND (I.E., SIGNS FACE ONCOMING TRAFFIC).

SIGN SETS 2 AND 4 ARE INACTIVE (I.E., SIGNS DO NOT FACE EITHER DIRECTION OF TRAFFIC) WHEN THE RESURFACING OPERATION IS LOCATED BETWEEN SIGN SETS 1 AND 3.

WHEN SIGN SETS 2 AND 4 ARE ACTIVE, SIGN SETS 1 AND 3 BECOME INACTIVE AND ARE ADVANCED TO BECOME SETS 2 AND 4 WITH SIGN LEGENDS TURNED AWAY FROM BOTH DIRECTIONS OF TRAFFIC. WHEN THE RESURFACING OPERATION ADVANCES TO BETWEEN SIGN SETS 2 AND 4, SIGN SETS 2 AND 4 BECOME ACTIVE (I.E., NEW SIGN SETS 2 AND 4) AND SIGN SETS 1 AND 3 ADVANCED IN THE DIRECTION OF THE OPERATION (I.E., NEW SIGN SETS 2 AND 4).

■ - CHANNELIZERS

○ - FLAGGER

NOTES:

DAYLIGHT FLAGGING OPERATIONS ONLY.

FLAG ASSEMBLIES FOR SIGNS WILL BE PAID FOR AS EACH PER SIGN, EXCEPT FOR SIGN W020-7 WHICH IS SUBSIDIARY TO THE SIGN.

SPEED	SIGN SPACING (FT.) (1)	
	NON-DIVIDED HIGHWAYS (S)	DIVIDED HIGHWAYS (S)
0-35	200	200
40-45	350	500
50-55	500	1000
60-70	1000	(SA)-1000 (SB)-1500 (SC)-2640

NOTES:

(1) SPACING BETWEEN SIGNS, BETWEEN LAST SIGN AND FLAGGER, BEGINNING OF TAPER OR SIGNED CONDITION.

SPACINGS MAY BE ADJUSTED AS NECESSARY TO MEET FIELD CONDITIONS.

(2) SIGN MANDATORY WHEN TEMPORARY ROAD CLOSURE IS NEEDED. FOR TEMPORARY ROAD CLOSURE BOTH DIRECTIONS MAY BE STOPPED AT THE SAME TIME UP TO A MAXIMUM OF 20 MINUTES.

TRAFFIC CONTROL FOR
SEAL COAT AGGREGATE
APPLICATION
SHEET 2 OF 4

"THIS MEDIA SHOULD NOT BE CONSIDERED A CERTIFIED DOCUMENT."

DATE PREPARED
5/3/2016
ROUTE STATE
DISTRICT SHEET NO.
5
COUNTY
JOB NO.
CONTRACT ID.
PROJECT NO.
BRIDGE NO.

DESCRIPTION	DATE

MISSOURI HIGHWAYS AND TRANSPORTATION COMMISSION
105 WEST CAPITOL
JEFFERSON CITY, MO 65102
1-888-ASK-MODOT (1-888-275-6636)

REV.