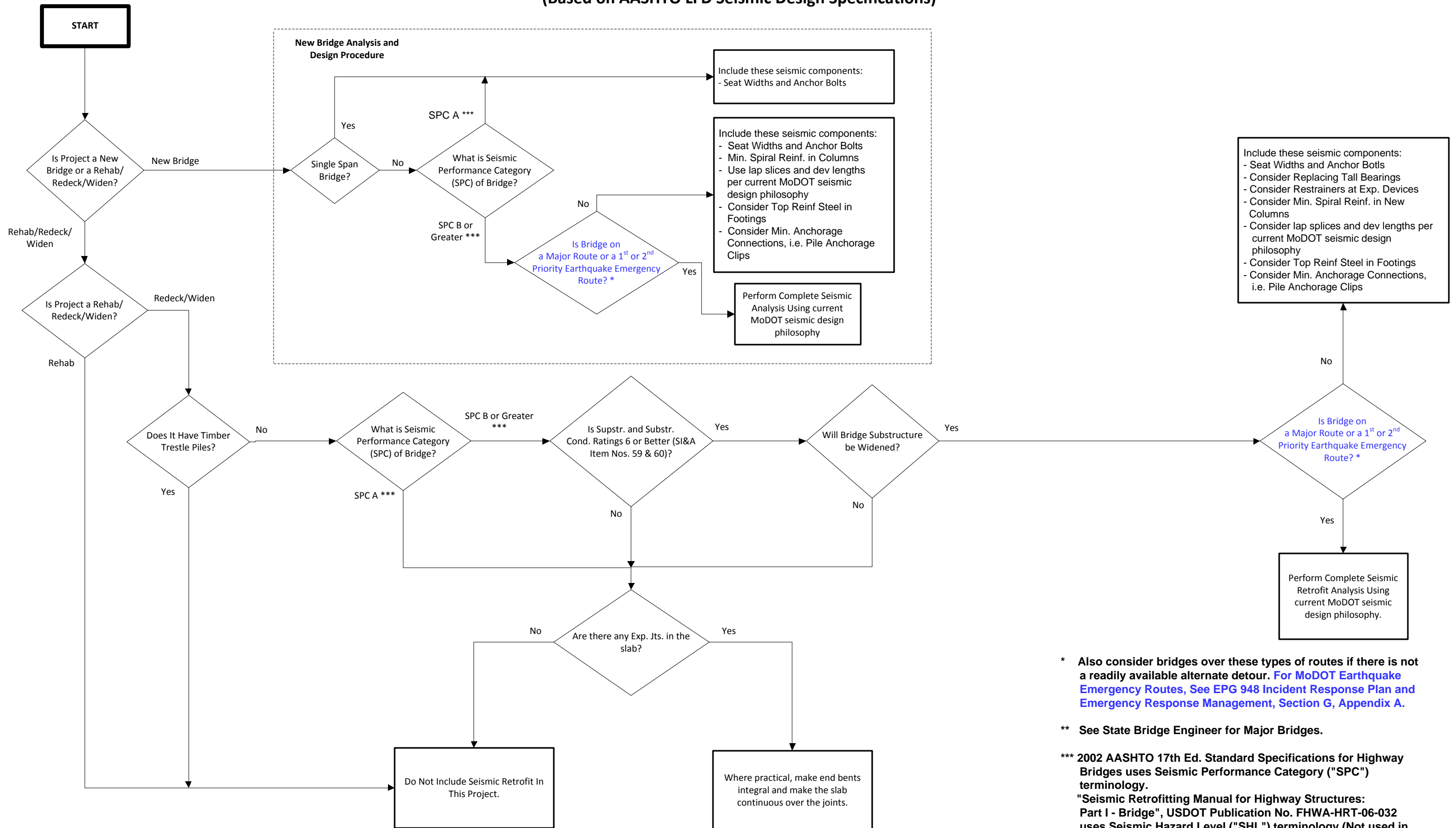


**Bridge Seismic Design Process  
(does not include Major Bridges) \*\***

**May 13, 2014**

**(Based on AASHTO LFD Seismic Design Specifications)**



\* Also consider bridges over these types of routes if there is not a readily available alternate detour. For MoDOT Earthquake Emergency Routes, See EPG 948 Incident Response Plan and Emergency Response Management, Section G, Appendix A.

\*\* See State Bridge Engineer for Major Bridges.

\*\*\* 2002 AASHTO 17th Ed. Standard Specifications for Highway Bridges uses Seismic Performance Category ("SPC") terminology. "Seismic Retrofitting Manual for Highway Structures: Part I - Bridge", USDOT Publication No. FHWA-HRT-06-032 uses Seismic Hazard Level ("SHL") terminology (Not used in flowchart).