

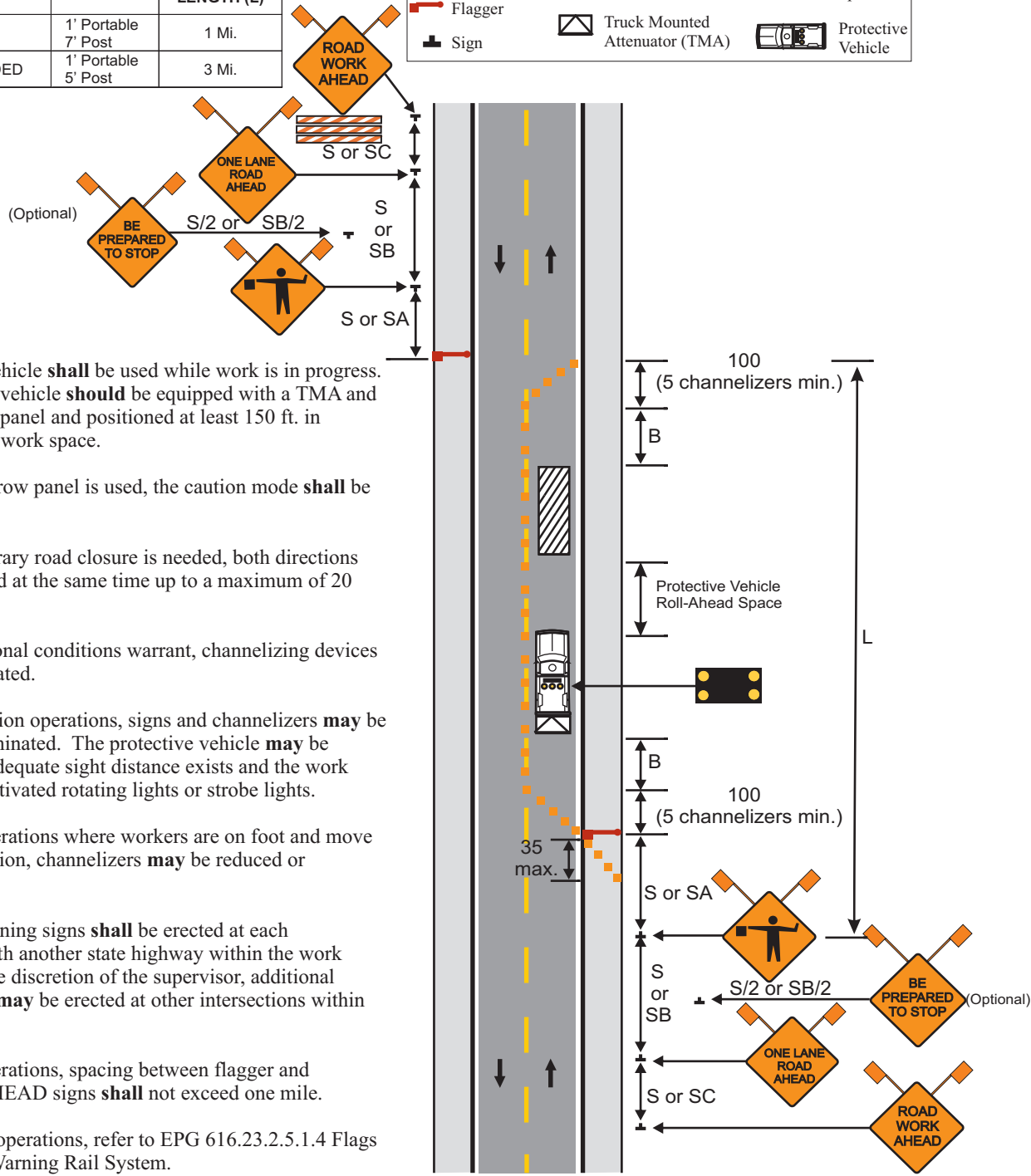
616.23.3.7 (TA-7) Lane Closure on Two-Lane Highways Using Flaggers

SPEED	SIGN SPACING (ft.)		TAPER LENGTH (ft.)		OPTIONAL BUFFER LENGTH (ft.) (B)	CHANNELIZER SPACING (ft.)	
	Undivided (S)	Divided (S)	Shoulder ¹ (T1)	Lane ² (T2)		Tapers	Buffer/ Work Areas
0-35	200	-	-	-	250	-	50
40-45	350	-	-	-	360	-	100
50-55	500	-	-	-	495	-	100
60-70	SA - 1000, SB - 1500 and SC - 2640		-	-	730	-	100

¹ Shoulder taper length based on 10 ft. (standard shoulder width) offset ² Lane taper length based on 12 ft. (standard lane width) offset

ROADWAY TYPE	SIGN HEIGHT	MAXIMUM WORK ZONE LENGTH (L)
URBAN	1' Portable 7' Post	1 Mi.
RURAL UNDIVIDED	1' Portable 5' Post	3 Mi.

- Channelizer
- Truck or Trailer Mounted Arrow Panel
- Work Space
- Flagger
- Truck Mounted Attenuator (TMA)
- Protective Vehicle
- Sign



A protective vehicle **shall** be used while work is in progress. The protective vehicle **should** be equipped with a TMA and flashing arrow panel and positioned at least 150 ft. in advance of the work space.

If a flashing arrow panel is used, the caution mode **shall** be displayed.

When a temporary road closure is needed, both directions **may** be stopped at the same time up to a maximum of 20 minutes.

Where operational conditions warrant, channelizing devices **may** be eliminated.

For short duration operations, signs and channelizers **may** be reduced or eliminated. The protective vehicle **may** be eliminated if adequate sight distance exists and the work vehicle uses activated rotating lights or strobe lights.

For mobile operations where workers are on foot and move with the operation, channelizers **may** be reduced or eliminated.

Additional warning signs **shall** be erected at each intersection with another state highway within the work zone. Upon the discretion of the supervisor, additional warning signs **may** be erected at other intersections within the work zone.

For mobile operations, spacing between flagger and FLAGGER AHEAD signs **shall** not exceed one mile.

For long-term operations, refer to EPG 616.23.2.5.1.4 Flags and Advance Warning Rail System.

- (Advanced Warning Rail System) For Long Term Operations