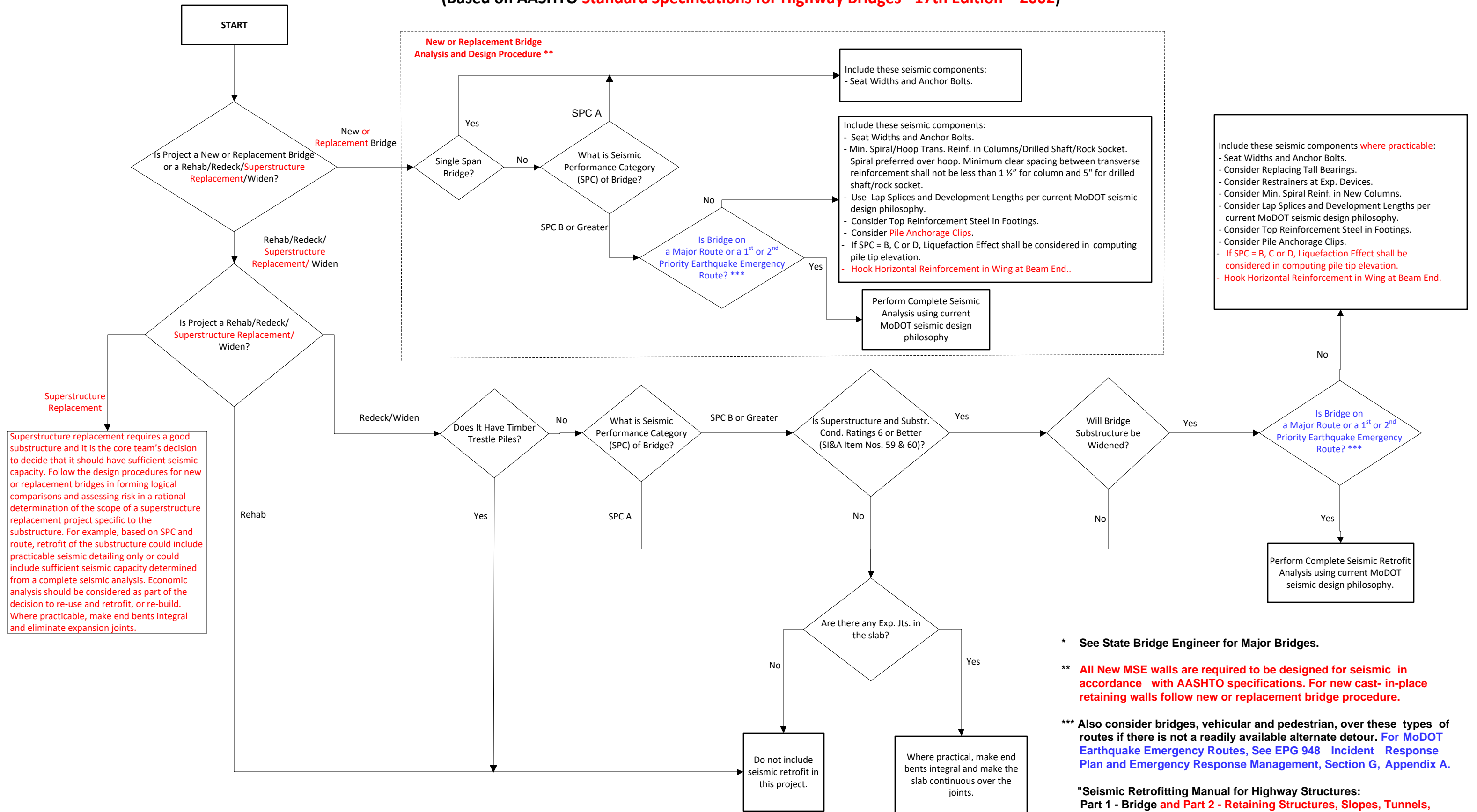


Bridge Seismic Design Process (does not include Major Bridges) *

August 10, 2018

(Based on AASHTO **Standard Specifications for Highway Bridges - 17th Edition – 2002**)



* See State Bridge Engineer for Major Bridges.

** All New MSE walls are required to be designed for seismic in accordance with AASHTO specifications. For new cast-in-place retaining walls follow new or replacement bridge procedure.

*** Also consider bridges, vehicular and pedestrian, over these types of routes if there is not a readily available alternate detour. For MoDOT Earthquake Emergency Routes, See EPG 948 Incident Response Plan and Emergency Response Management, Section G, Appendix A.

"Seismic Retrofitting Manual for Highway Structures: Part 1 - Bridge and Part 2 - Retaining Structures, Slopes, Tunnels, Culverts and Roadways", USDOT Publication No. FHWA-HRT-06-032 uses Seismic Hazard Level ("SHL") terminology (Not used in flowchart).