

# 616.23.3.7b (TA-7b) Lane Closure on Two-Lane Highways Using Portable Signal Flagging Device (PSFD)

SPEED	SIGN SPACING (ft.)		TAPER LENGTH (ft.)		OPTIONAL BUFFER LENGTH (ft.) (B)	CHANNELIZER SPACING (ft.)	
	Undivided (S)	Divided (S)	Shoulder <sup>1</sup> (T1)	Lane <sup>2</sup> (T2)		Tapers	Buffer/ Work Areas
0-35	200	-	-	-	120	-	50
40-45	350	-	-	-	220	-	100
50-55	500	-	-	-	335	-	100
60-70	1000	-	-	-	550	-	100

<sup>1</sup> Shoulder taper length based on 10 ft. (standard shoulder width) offset    <sup>2</sup> Lane taper length based on 12 ft. (standard lane width) offset

**Notes:**

PSFDs should not be used for long-term stationary operation. For long-term stationary operation, refer to EPG 616.23.3.9 (TA-9) Lane Closure on Two-Lane Highways Using Traffic Control Signals.

If the PSFD fails, reference EPG 616.23.3.7 (TA-7) Lane Closure on Two-Lane Highways Using Flaggers. The signal sign may be used with the human flagger to finish the same day operation. The FLAGGER AHEAD sign shall be used until the PSFD is operable.

All PSFD operators shall be trained as a certified flagger with knowledge of the use of PSFDs.

PSFDs shall be removed when not in use.

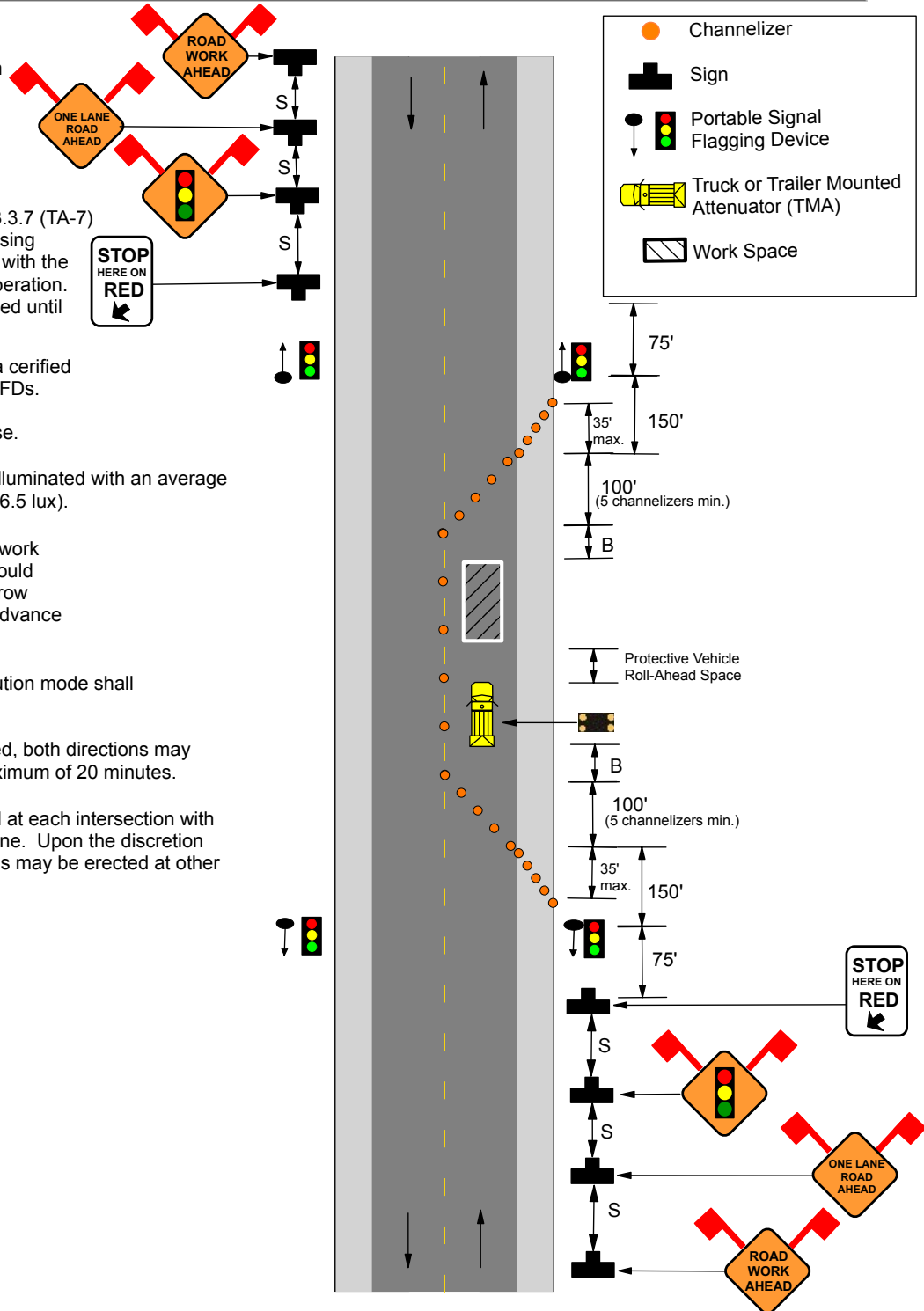
If used at night, the PSFD site shall be illuminated with an average maintained intensity of 0.6 footcandles (6.5 lux).

A protective vehicle shall be used while work is in progress. The protective vehicle should be equipped with a TMA and flashing arrow panel and positioned at least 150 ft. in advance of the work space.

If a flashing arrow panel is used, the caution mode shall be displayed.

When a temporary road closure is needed, both directions may be stopped at the same time up to a maximum of 20 minutes.

Additional warning signs shall be erected at each intersection with another state highway within the work zone. Upon the discretion of the supervisor, additional warning signs may be erected at other intersections within the work zone.



TA - 7b