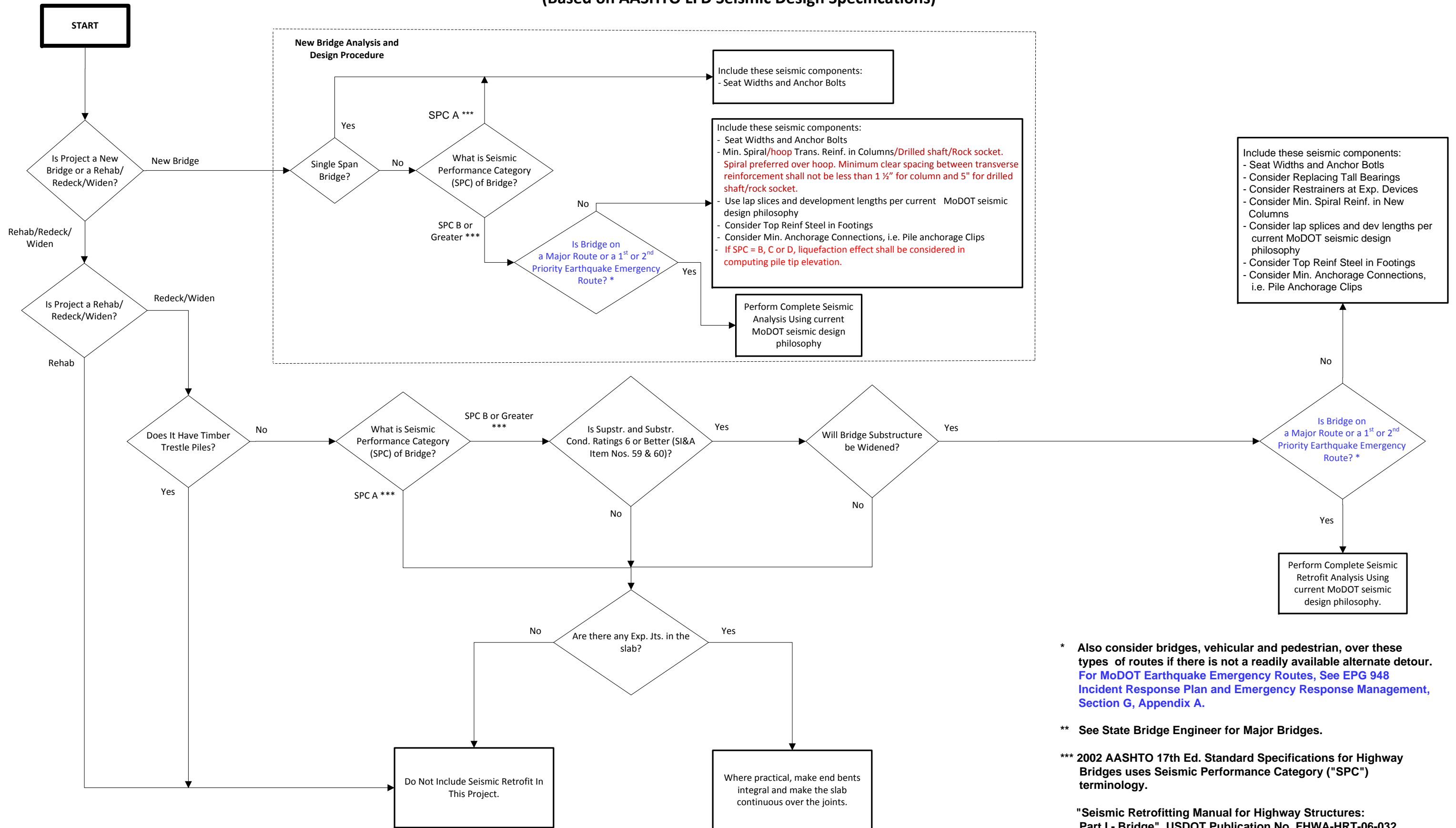


# Bridge Seismic Design Process (does not include Major Bridges) \*\*

August 09, 2017

(Based on AASHTO LFD Seismic Design Specifications)



\* Also consider bridges, vehicular and pedestrian, over these types of routes if there is not a readily available alternate detour. For MoDOT Earthquake Emergency Routes, See EPG 948 Incident Response Plan and Emergency Response Management, Section G, Appendix A.

\*\* See State Bridge Engineer for Major Bridges.

\*\*\* 2002 AASHTO 17th Ed. Standard Specifications for Highway Bridges uses Seismic Performance Category ("SPC") terminology.

"Seismic Retrofitting Manual for Highway Structures: Part I - Bridge", USDOT Publication No. FHWA-HRT-06-032 uses Seismic Hazard Level ("SHL") terminology (Not used in flowchart).